



## INTERNATIONAL APPLICATION PUBLISHED UNDER THE PATENT COOPERATION TREATY (PCT)

<b>(51) International Patent Classification<sup>5</sup> :</b> <b>A61F 2/02, C12Q 1/68</b> <b>A61K 37/10</b>	<b>A1</b>	<b>(11) International Publication Number:</b> <b>WO 93/00049</b> <b>(43) International Publication Date:</b> 7 January 1993 (07.01.93)
<b>(21) International Application Number:</b> PCT/US91/04686 <b>(22) International Filing Date:</b> 1 July 1991 (01.07.91)  <b>(30) Priority data:</b> 718,274      20 June 1991 (20.06.91)      US  <b>(71) Applicant:</b> XOMA CORPORATION [US/US]; 2910 Seventh Street, Berkeley, CA 94710 (US).  <b>(72) Inventors:</b> GRINNA, Lynn ; 1044 20th Street, Santa Monica, CA 90403 (US). THEOFAN, Georgia ; 10905 Ohio Avenue, No. 101, Los Angeles, CA 90024 (US). PARSONS, Thomas, F. ; 270 Renoak Way, Arcadia, CA 91006 (US).  <b>(74) Agent:</b> SHARP, Jeffrey, S.; Marshall, O'Toole, Gerstein, Murray & Bicknell, Two First National Plaza, Suite 2100, Chicago, IL 60603 (US).		<b>(81) Designated States:</b> AU, CA, JP, European patent (AT, BE, CH, DE, DK, ES, FR, GB, GR, IT, LU, NL, SE).  Published <i>With international search report.</i>
<b>(54) Title:</b> OSTEOGENIC FACTOR  <b>(57) Abstract</b> <p>The present invention provides osteogenically active protein preparations comprising a heterodimer of P3 OF 31-34 subunit B and P3 OF 31-34 subunit D, which subunits are linked with at least one disulfide bond and methods for their preparation. The invention further provides cell lines transformed with nucleotide sequences encoding P3 OF 31-34 subunit B and P3 OF 31-34 subunit D and vectors comprising those sequences in operative association with an expression control sequence.</p>		

**FOR THE PURPOSES OF INFORMATION ONLY**

Codes used to identify States party to the PCT on the front pages of pamphlets publishing international applications under the PCT.

AT	Austria	FI	Finland	MI	Mali
AU	Australia	FR	France	MN	Mongolia
BB	Barbados	GA	Gabon	MR	Mauritania
BE	Belgium	GB	United Kingdom	MW	Malawi
BF	Burkina Faso	GN	Guinea	NL	Netherlands
BG	Bulgaria	GR	Greece	NO	Norway
BJ	Benin	HU	Hungary	PL	Poland
BR	Brazil	IE	Ireland	RO	Romania
CA	Canada	IT	Italy	RU	Russian Federation
CF	Central African Republic	JP	Japan	SD	Sudan
CG	Congo	KP	Democratic People's Republic of Korea	SE	Sweden
CH	Switzerland	KR	Republic of Korea	SN	Senegal
CI	Côte d'Ivoire	LI	Liechtenstein	SU	Soviet Union
CM	Cameroon	LK	Sri Lanka	TD	Chad
CS	Czechoslovakia	LU	Luxembourg	TG	Togo
DE	Germany	MC	Monaco	US	United States of America
DK	Denmark	MG	Madagascar		
ES	Spain				

- 1 -

OSTEOGENIC FACTOR

5

BACKGROUND OF THE INVENTION

This is a continuation-in-part of application Serial No. 07/415,555 filed October 4, 1989 which is a continuation-in-part of application Serial No. 07/256,034 filed October 11, 1988.

10

The present invention relates to novel preparations of osteogenic factors, methods for their isolation and uses thereof (to repair bone defects). The preparations so isolated exhibit the ability to promote or stimulate the formation of bone at the site of their application. Bone is a highly specialized connective tissue with unique mechanical properties derived from its extensive matrix structure. A network of fibrous bundles composed of the protein, collagen, is presumed to provide the tension-resistant behavior of bone. In addition, other materials including proteoglycans, noncollagenous proteins, lipids and acidic proteins associated with a mineral phase consisting primarily of poorly crystallized hydroxyapatite are deposited in the extensive matrix architecture of bone. Bone tissue is continuously renewed, by a process referred to as remodeling, throughout the life of mammals. This physiologic process might serve to maintain the properties of a young tissue.

15

20

25

30

35

The processes of bone formation and renewal are carried out by specialized cells. Osteogenesis vis-a-vis morphogenesis and growth of bone is presumably carried out by the "osteoblasts" (bone-forming cells). Remodeling of bone is apparently brought about by an interplay between the

- 2 -

activities of the bone-resorbing cells called "osteoclasts" and the bone-forming osteoblasts. The bony skeleton is thus not only an architectural structure with a mechanical function but also is a living tissue capable of growth, modeling, remodeling and repair. Since these processes are carried out by specialized living cells, chemical (pharmaceutical/hormonal), physical and physicochemical alterations can affect the quality, quantity and shaping of bone tissue.

A variety of pathological disorders as well as physical stress (for example, fracture) necessitate active formation of bone tissue at rates that are significantly higher than that which can be supported by the normal milieu of the body. It is thus of value to identify physiologically acceptable substances (hormones/pharmaceuticals/growth factors) that can induce the formation of bone at a predetermined site where such substances are applied, for example, by implantation. Such agents could either provide a permissive matrix structure for the deposition of bone-forming cells, or stimulate bone-forming cells, or induce the differentiation of appropriate progenitors of bone-forming cells.

The presence of proteinaceous and prostaglandin-like growth stimulators for osteoblasts has been examined, see reviews: Raisz, et al., New Engl. J. Med., 309(1), 29-35 (1983) and Raisz, et al., New Engl. J. Med., 309(2), 83-89 (1983).

The observation that a bone graft from the same individual or a compatible individual leads to the formation of new healthy bone at the site of the graft, led to the hypothesis that bone contains active proteins which promote local osteogenesis. Urist, et al. disclosed evidence that bone matrix-associated

- 3 -

noncollagenous proteins can be isolated by dissociative treatment of demineralized bone powder and that this mixture of noncollagenous proteins contain the local osteoinductive capability which was designated by Urist (e.g., Science, 150, 893 (1965)) as bone morphogenetic activity.

A variety of osteogenic, cartilage-inducing and bone-inducing protein preparations have been described in the art. Urist, et al. and others have described various partially fractionated protein preparations with osteoinductive properties. These preparations are fractionated from the noncollagenous protein mixture extracted using different dissociative treatment of demineralized bone powder and subjecting the extract to various protein fractionation steps. Several such preparations have been characterized by different assays to determine their biological activities and by protein components identified using different standard protein analytical methods.

Urist, et al., Proc. Natl. Acad. Sci. (USA), 81, 371-375 (1984), discloses that bovine BMP has an apparent molecular weight of 18.5K daltons. The publication further discloses other bone derived proteins with apparent molecular weights of 17.5K and 17K, proteins with higher molecular weights of 34K, 24K and 22K and a protein with a lower molecular weight of 14K. The publication provided the N-terminal sequence for the 17.5K protein which had an unblocked amino terminus.

Urist, European Patent Application No. 212,474, discloses peptide fragments having molecular weights between about 4K and 7K comprising at least an active portion of the osteoinductive and immunoreactive domain of the 17.5K BMP molecule.

- 4 -

Wang, et al., Patent Cooperation Treaty Application No. WO 88/00205, discloses a bovine bone inductive factor which is isolated from demineralized bone powder by a procedure comprising a number of chromatographic and dialysis steps. The bone inductive factor so isolated was found to contain, as judged by a non-reducing SDS-PAGE analysis, one or more proteins having a molecular weight of approximately 28,000 to 30,000 daltons. Reducing SDS-PAGE analysis of the active protein(s) yielded two major bands having the mobility of proteins having molecular weights of 18,000 daltons and 20,000 daltons respectively. Wang, et al., discloses three bovine proteins designated BMP-1, BMP-2 and BMP-3 where BMP is bone morphogenetic protein and provides peptide sequences for the proteins. Wang, et al., also discloses the nucleotide sequences and amino acid sequences predicted thereby of four human proteins designated BMP-1, BMP-2 Class I, BMP-2 Class II and BMP-3.

Wozney, et al., Science, 242, 1528-1533 (1988), describes the nucleotide sequences and amino acid sequences predicted thereby of three human complementary DNA clones (designated BMP-1, BMP-2A and BMP-3) corresponding to three polypeptides present in an extract of bovine bone which is capable of inducing de novo bone formation. Recombinant human BMP-1, BMP-2A and BMP-3 proteins were said to be independently capable of inducing the formation of cartilage in vivo. The nucleotide sequence and derived amino acid sequence of a fourth complementary DNA clone (designated BMP-2B) is also described. The BMP-1, BMP-2A, BMP-2B and BMP-3 proteins of this publication appear to correspond, respectively, to the BMP-1, BMP-2 Class I, BMP-2 Class II and BMP-3 proteins.

- 5 -

Kubersampath, et al., Patent Cooperation Treaty Application No. WO 89/09787 claiming priority based on applications including U.S. Serial No. 179,406 filed April 8, 1988 and Oppermann, et al., Patent Cooperation Treaty Application No. WO 89/09788 claiming priority based on applications including U.S. Serial No. 179,406 filed April 8, 1988 disclose nucleotide sequences and amino acid sequences predicted thereby of a human protein designated OP-1 and certain consensus nucleotide sequences and their amino acid sequences predicted thereby. These recombinant proteins are said to be independently capable of inducing the formation of bone in vivo.

Wang, et al., Proc. Natl. Acad. Sci. USA, 87, pp. 2220-2224 (1990), describe the nucleotide sequence and amino acid sequence predicted thereby of a human protein designated BMP-2A, corresponding to a polypeptide present in an extract of bovine bone which is capable of inducing de novo bone formation. Recombinant human BMP-2A protein is said to be independently capable of inducing the formation of bone in vivo.

Kubersampath, et al., J. Biol. Chem., 265, 13198-13205 (1990), describes a bovine bone-derived protein that induces bone formation. The bone-inductive protein was found to contain, as judged by a non-reducing SDS-PAGE analysis, a protein with a molecular weight of approximately 30,000 daltons. Reducing SDS-PAGE analysis yielded two major bands corresponding to molecular weights of 18,000 and 16,000 daltons. The 18,000-dalton subunit is the protein product of the bovine equivalent of the human OP-1 gene and the 16,000-dalton subunit is the protein product of the bovine equivalent of the human BMP-2A gene.

- 6 -

Celeste, et al., Proc. Natl. Acad. Sci. USA,  
87, 9843-9847 (1990), describe the human protein  
sequences derived from the nucleotide sequence of six  
genes encoding proteins related to TGF- $\beta$ . These  
5 encoded proteins are designated BMP-2, BMP-3, BMP-4,  
BMP-5, BMP-6 and BMP-7.

#### SUMMARY OF THE INVENTION

The present invention is directed to novel  
10 preparations of osteogenic factors, methods for their  
isolation and uses thereof. Specifically, the  
invention is based on the discovery that a primary  
osteogenically active protein of P3 OF 31-34 is a  
heterodimer of P3 OF 31-34 subunit B (hereinafter  
15 "subunit B") and P3 OF 31-34 subunit D (hereinafter  
"subunit D"). Preparations comprising the B/D  
heterodimer are characterized by the ability to  
stimulate osteogenesis. The invention provides a  
method of producing an osteogenic protein preparation  
20 comprising a heterodimer of a first polypeptide  
subunit and a second polypeptide subunit comprising  
the steps of culturing in a suitable culture media one  
or more cell lines transformed with a first and a  
second nucleotide sequence, said first nucleotide  
25 sequence being selected from the group consisting of:  
the nucleotide sequence encoding subunit B as shown in  
SEQ ID NO: 3; a nucleotide sequence which encodes the  
same sequence of amino acids as encoded by the  
nucleotide sequence shown in SEQ ID NO: 3; a  
30 nucleotide sequence which is at least 80% homologous  
with the nucleotide sequence shown in SEQ ID NO: 3  
and which encodes a homologue of subunit B having the  
osteogenic activity of P3 OF 31-34 subunit B; and a  
nucleotide sequence which would be at least 80%  
35 homologous with the nucleotide sequence shown in SEQ



- 7 -

ID NO: 3 but for the redundancy of the genetic code and which encodes a homologue of subunit B having the osteogenic activity of P3 OF 31-34 subunit B. The second nucleotide sequence is selected from the group

5 consisting of: the nucleotide sequence encoding subunit D as shown in SEQ ID NO: 1; a nucleotide sequence which encodes the same sequence of amino acids as encoded by the nucleotide sequence shown in SEQ ID NO: 1; a nucleotide sequence which is at least

10 80% homologous with the nucleotide sequence shown in SEQ ID NO: 1 and which encodes a homologue of subunit D having the osteogenic activity of P3 OF 31-34 subunit D; and a nucleotide sequence which would be at least 80% homologous with the nucleotide sequence

15 shown in SEQ ID NO: 1 but for the redundancy of the genetic code and which encodes a homologue of subunit D having the osteogenic activity of P3 OF 31-34 subunit D. The cell line(s) is (are) cultured to produce the first and second polypeptide subunits

20 which are linked with a disulfide bond to form heterodimers and are isolated. The B/D heterodimers are preferably purified and isolated according to the steps of subjecting the culture medium to a series of chromatography steps utilizing a Q-Sepharose column,

25 an S-Sepharose column and a Phenyl-Sepharose column to recover an active fraction. The active fraction is then subjected to reverse phase chromatography using a C-18 high performance liquid chromatography column equilibrated with buffers containing trifluoroacetic

30 acid and acetonitrile by eluting the active preparation at concentrations between 35% and 45% acetonitrile. The invention further provides the osteogenic preparations prepared thereby and pharmaceutical products comprising the osteogenic

35 preparation so made. Also provided by the invention

- 8 -

is a method for transforming a cell with genes encoding both subunits B and D and homologues thereof and cells transformed thereby. The invention further provides vectors comprising a first and a second DNA  
5 sequence in operative association with an expression control sequence which sequence encode subunits B and D or homologues thereof. In addition, the invention provides a method for inducing bone formation in a mammal comprising administering to the mammal an  
10 effective amount of the osteogenic preparation comprising heterodimers of subunits B and D or homologues thereof. The invention further provides compositions for implantation into a mammal comprising the osteogenic preparation comprising heterodimers of  
15 subunits B and D admixed with a physiologically acceptable matrix material.

#### BRIEF DESCRIPTION OF THE FIGURES

Figure 1 illustrates a method for the  
20 purification of P3 OF 31-34 (osteogenic factors) proteins from calf bone.

Figure 2A shows the apparent molecular weight of the osteogenic factors as determined by non-reducing SDS polyacrylamide gel electrophoresis  
25 followed by silver staining.

Figure 2B shows reducing SDS polyacrylamide gel electrophoresis of P3 OF 31-34 proteins followed by silver staining.

Figure 3A shows the isolation of the  
30 subunits of the P3 OF 31-34 proteins (osteogenic factors) by reverse phase HPLC.

Figure 3B shows the apparent molecular weights of the subunits as detected by silver staining of reducing SDS polyacrylamide gel electrophoretic  
35 analysis.

- 9 -

Figure 4A represents the elution profile obtained by high performance liquid chromatography, on a reverse phase C18 column, of the PS Pool.

Figure 4B shows non-reducing SDS polyacrylamide gel electrophoresis of P3 OF 31-34 proteins eluting in fractions 26, 27 and 28 from the reverse phase HPLC of the PS Pool.

Figure 5A shows the isolation and identification of subunits of the P3 OF 31-34 proteins eluting in fraction 26, from the reverse phase HPLC of the PS Pool.

Figure 5B shows the isolation and identification of subunits of the P3 OF 31-34 proteins eluting in fraction 28 from the reverse phase HPLC of the PS Pool.

Figure 6 shows the nucleotide and derived amino acid sequences, also set out in SEQ ID NOS: 1 and 2, of the cDNA gene for human mature D.

Figure 7 shows the nucleotide and derived amino acid sequences, also set out in SEQ ID NOS: 3 and 4, of the cDNA gene for human mature B.

Figure 8 shows the nucleotide and derived amino acid sequences, also set out in SEQ ID NOS: 5 and 6, of the cDNA gene for human C.

Figure 9 shows reducing and non-reducing SDS polyacrylamide gel electrophoresis of enriched samples isolated from media of CHO cells transfected with both the gene sequence for human mature B and the gene sequence for human mature D (Prep B/D), or separately transfected with only the gene sequence for human mature D (Prep D), or with only the gene sequence for human mature B (Prep B). Proteins were visualized using autoradiography following Western Blot analysis.

Figure 10 shows the biological activity of the enriched samples of Prep B/D, Prep B+D, Prep D and

- 10 -

Prep B as determined using the rat implant assay following implantation of various amounts of immunoreactivity.

5                    DETAILED DESCRIPTION OF THE INVENTION

                  The present invention relates to the  
osteogenic preparation known as P3 OF 31-34 which has  
previously been characterized by applicants as  
comprising osteogenically active proteins which during  
10 gel filtration during non-reducing and dissociative  
conditions, elute as proteins having apparent  
molecular weights within the range of about 31,000 to  
34,000 daltons. In co-owned and copending U.S. Patent  
Application Serial No. 07/415,555 filed October 4,  
15 1989 the disclosure of which is hereby incorporated by  
reference it is disclosed that the P3 OF 31-34  
osteogenic protein material yields four distinct peaks  
when analyzed by reverse phase HPLC after reduction.  
When analyzed by reducing SDS-PAGE and silver  
20 staining, three of the peaks are characterized as  
protein subunits migrating with apparent molecular  
weights within the range of 17,500 to 19,000 daltons,  
and the fourth peak is characterized as a protein  
subunit migrating with an apparent molecular weight  
25 within the range of 16,000 to 17,500 daltons. The  
polypeptide subunits of P3 OF 31-34 have been  
designated as subunits A, B, C and D. The subunits  
have been characterized by amino acid sequences and  
cDNA sequences encoding the subunits. The present  
30 invention is based on the discovery that a primary  
osteogenically active protein comprises a heterodimer  
of P3 OF 31-34 subunit B and P3 OF 31-34 subunit D  
wherein the subunits are linked by at least one  
disulfide bond.

- 11 -

The osteogenic protein preparation comprising the B/D heterodimer may be used to form a composition for implantation into a mammal by admixture with a physiologically acceptable matrix material. In addition, devices for implantation into mammals comprising a structural member encoated with the osteogenic factor/matrix composition are provided by the invention.

The present invention is intended to encompass osteogenically active heterodimers of subunit B and D analogues. Specifically, it is contemplated that various deletions, insertions and substitutions can be made in the amino acid sequences of subunits B and D such that the sequences will vary from those which are present in naturally derived mammalian B/D heterodimer. The B/D heterodimer and its subunits can also be chemically or enzymatically modified, can be fusion proteins or can be bound to suitable carrier substances such as a polymer. To the extent that such molecules retain osteogenic activity, they are contemplated as being within the scope of the present invention.

The subunit B and D polypeptides can be produced by expression of DNA prepared by molecular cloning technologies or by chemical synthesis of oligonucleotide and assembly of the oligonucleotide by any of a number of techniques prior to expression in a host cell. [See, e.g., Caruthers, U.S. Patent No. 4,500,707; Balland, et al., *Biochimie*, 67, 725-736 (1985); Edge, et al., *Nature*, 292, 756-762 (1981)]. Messenger RNA encoding subunits B or D or analogs thereof may also be expressed in vitro. Changes in activity levels are measured by the appropriate assay. Modifications of such protein properties as redox or thermal stability, hydrophobicity, susceptibility to

- 12 -

proteolytic degradation, or the tendency to aggregate with carriers or into multimers are assayed by methods well known to those of ordinary skill in the art.

Prokaryotic microorganisms (such as  
5 bacteria) and eukaryotic microorganisms (such as yeast) may be employed as host cells according to the present invention. S. cerevisiae, or common baker's yeast, is the most commonly used among eukaryotic microorganisms, although a number of other strains are  
10 commonly available. For expression in bacteria and yeast, cloning and expression vectors are well known to those skilled in the art, such as lambda phage and pBR322 in E. coli and YRp7 in S. cerevisiae.

Cells derived from multicellular eukaryotes  
15 may also be used as hosts. Cells from vertebrate or invertebrate eukaryotes may be used, and those skilled in the art know of appropriate expression vectors for use therein, such as SV40 retroviral and papilloma viral vectors for mammalian host cells, NPV vectors  
20 for invertebrate host cells and Ti vectors for plant cells.

It is preferred that host cells be transformed with genes encoding both subunits B and D in order that intracellular processing link the  
25 subunits with at least one disulfide bond. Nevertheless, it is contemplated that the subunits can be separately expressed and the subunits be dimerized in vitro utilizing denaturation/renaturation techniques known in the art.

30 The present invention further discloses methods of using the B/D heterodimers and compositions which comprise them as pharmaceutical agents for the stimulation of bone growth in mammals. Pharmaceutically acceptable compositions comprised of  
35 one or more of the proteins and/or active polypeptides

- 13 -

and/or immunologically related entities in combination with a pharmaceutically acceptable carrier are also disclosed herein. Such compositions can optionally contain other bioactive materials or other ingredients which aid in the administration of the composition or add to the effectiveness of the composition.

The term "osteogenesis" means formation of new bone or induction of growth of pre-existing bones at specific sites in response to local administration (for example, implantation of an active preparation in a pharmaceutically acceptable manner). The term "osteogenic amount" refers to an amount of the osteogenic protein and/or active polypeptide and/or immunologically related entity sufficient to provide the desired effect. The term "osteogenically active" or "osteogenic" means that the preparation has the capability to promote or induce osteogenesis.

The application of the osteogenic factors can be conveniently accomplished by administering, such as by implanting, a lyophilized preparation or suspension of one or more of the osteogenic proteins and/or one or more active polypeptide and/or one or more immunologically related entities in sufficient quantity to promote osteogenesis at the desired site. Alternatively, pharmaceutically acceptable compositions can be used which are comprised of one or more of the osteogenic proteins and/or one or more of the active polypeptides and/or one or more of the immunologically related entities described herein and a pharmaceutically acceptable matrix such as collagenous proteins or matrix material derived from powdered bone extracted with strong denaturing agents, or other pharmaceutically acceptable carriers.

While the B/D heterodimer is a major osteogenically active protein, it is contemplated that

- 14 -

preparations comprising the B/D heterodimer in combination with other homo- and heterodimers of P3 OF 31-34 subunits A, B, C, D and E may provide synergistic effects with respect to osteogenic activity.

The following examples are included to further illustrate the invention but are not to be construed as limitations thereon.

10

#### EXAMPLE 1

##### Purification of Bovine Osteogenic Factors

According to this example, bovine osteogenic factors were isolated from demineralized calf bone powder according to the procedure disclosed in Figure 1. Approximately 200 pounds of diaphysial sections of calf bone were scraped clean of connective tissue and marrow was removed. The demarrowed sections were ground to a powder and washed with approximately 2100 liters of cold deionized water. The bone powder was allowed to settle during the water washes and the suspended connective tissue fragments were removed with the supernatant and discarded.

The bone powder was suspended in a total of approximately 570 liters of cold 0.5 M HCl for about 2 hours and was then allowed to settle. The HCl was removed with the supernatant and discarded. The remaining HCl was removed by washing the bone powder with approximately 700 liters of cold deionized water, followed by approximately 350 liters of cold 0.1 M Tris, pH 7, solution. The demineralized bone powder (demineralized bone) was allowed to settle and the supernatant was discarded.

The demineralized bone powder was suspended in approximately 140 liters of cold 4 M guanidine hydrochloride containing 0.01 M Tris, pH 7, and 0.001



- 15 -

M EDTA for about 20 hours. The extracted bone powder was removed by filtration and discarded. The supernatant (guanidine extract) was saved.

The guanidine extract was filtered through  
5 Amicon hollow fiber cartridges (H10-P100-20) with an average molecular weight cutoff of 100,000 daltons. The 100,000 dalton filtrate (100K filtrate) was then concentrated through Amicon spiral cartridges (S10Y10) with molecular weight cutoffs of 10,000 daltons. The  
10 10,000 dalton retentate (10K retentate) was saved and assayed for pH, conductivity, total protein content by BCA colorimetric protein assay (Pierce Chemicals, Rockford, Illinois), resolution of protein  
15 constituents in the preparations using reducing SDS-PAGE followed by silver staining or Coomassie Blue staining and determination of the osteogenic activity using the rat implant assay disclosed below in Example 2.

The 10K retentate was exchanged into 6 M  
20 urea containing 50 mM 2-(N-morpholino)ethanesulfonic acid (MES), pH 6.5, by diafiltration with an Amicon spiral cartridge (S10Y10) with a molecular weight cutoff of 10,000 daltons.

The diafiltered extract was adjusted to a pH  
25 of 6.5 using 5 M NaOH and a conductivity of 10 mS/cm using 5 M NaCl and applied to a 0.4 liter S-Sepharose column (Pharmacia Chemicals, New Jersey) equilibrated with 6 M urea containing 50 mM MES, pH 6.5, adjusted to conductivity of 10 mS/cm. The column was washed  
30 with 2.4 liters of 6.0 M urea containing 50 mM MES, pH 6.5, adjusted to a conductivity of 10 mS/cm to elute the unbound proteins. The S-Sepharose active pool (SS Pool) was eluted with 1.2 liters of 6.0 M urea containing 50 mM MES, pH 6.5, and 0.5 M NaCl. The  
35 S-Sepharose active pool was concentrated using

- 16 -

membrane filters with an average molecular weight cutoff of 10,000 daltons. The pH and conductivity of the preparation were determined, the total protein content was measured by BCA protein assay, the protein constituents were analyzed using SDS-PAGE followed by silver staining and the osteogenic activity was determined using the rat implant assay.

The S-Sepharose active pool was exchanged into 6 M urea containing 20 mM ethanolamine, pH 9.5 by diafiltration with an Amicon spiral cartridge (S10Y10) with a molecular weight cutoff of 10,000 daltons.

The G-25 Pool was applied to a 0.7 liter Q-Sepharose column (Pharmacia Chemicals, New Jersey) equilibrated with 6 M urea containing 20 mM ethanolamine, pH 9.5. The column was washed with 2.1 liters of 6 M urea containing 20 mM ethanolamine, pH 9.5, to elute the unbound proteins. The osteogenically active protein pool (QS Pool) was eluted from Q-Sepharose column with 1.4 liters of 6 M urea containing 20 mM ethanolamine, pH 9.5, and 0.2 M NaCl. The QS Pool was adjusted to a pH of 6-7 with glacial acetic acid and concentrated using membrane filters with an approximate molecular weight cutoff of 10,000 daltons. The QS Pool was assayed for pH and conductivity; the total protein content was determined by BCA protein assay, the protein constituents were analyzed by reducing SDS-PAGE followed by silver staining and the osteogenic activity was measured using the rat implant assay.

The QS Pool was then applied to a preparative C-18 HPLC column equilibrated with a buffer containing, by volume, 70% Buffer A (Buffer A is 0.05% trifluoroacetic acid in water) and 30% Buffer B (Buffer B is 0.025% trifluoroacetic acid in acetonitrile). Bound proteins were eluted using a

- 17 -

linear gradient of 30% to 60% acetonitrile in 120 minutes. The osteogenic activity (Prep HPLC Pool) eluted within the concentrations of 35% to 45% acetonitrile. The Prep HPLC Pool was lyophilized and resuspended in 1 ml of water. The Prep HPLC Pool was assayed for pH and conductivity; the total protein content was determined by BCA protein assay, the protein constituents were analyzed by reducing SDS-PAGE followed by silver staining and the osteogenic activity was measured using the rat implant assay.

The Prep HPLC Pool was adjusted to a protein concentration of 0.5 mg/ml in 6 M urea containing 50 mM Tris, pH 7.5-8.0, 20 mM ethanolamine and 0.5 M NaCl and was applied to a 5-10 ml Chelating-Sepharose 6B column (Pharmacia Chemicals, New Jersey) charged with  $\text{Cu}^{2+}$  and equilibrated with 6 M urea containing 50 mM Tris, pH 7.5-8.0, 20 mM ethanolamine and 0.5 M NaCl. The column was washed with 5 column volumes of equilibration buffer followed by 10 column volumes of 6 M urea containing 50 mM Tris, pH 7.4-7.8, to elute the unbound proteins. Bound proteins were eluted with 10 column volumes of 6 M urea containing 50 mM Tris, pH 7.4-7.8, and 4 mM imidazole. The osteogenic activity (CC Pool) was eluted from the copper chelate column with 10 column volumes of 6 M urea containing 50 mM Tris, pH 7.4-7.8, and 15 mM imidazole. The CC Pool was assayed for total protein as estimated by absorbance at 280 nm, and its osteogenic activity was measured using the rat implant assay.

The CC Pool was adjusted to 25% ammonium sulfate and loaded onto a 1-3 ml column of Phenyl-Sepharose (Pharmacia Chemicals, New Jersey) equilibrated with 6 M urea containing 25% ammonium sulfate, 50 mM Tris pH 7.4-7.8. The column was washed

- 18 -

with 10 column volumes of 6 M urea containing 25% ammonium sulfate, and 50 mM Tris pH 7.4-7.8, to elute the unbound proteins. Bound proteins were eluted with 10 column volumes of 6 M urea containing 15% ammonium sulfate, 50 mM Tris pH 7.4-7.8. The osteogenic activity (PS Pool) was eluted from the Phenyl-Sepharose column with 6 M urea containing 50 mM Tris pH 7.4-7.8, was assayed for total protein as estimated by absorbance at 280 nm, and its osteogenic activity was measured using the rat implant assay.

The PS Pool was applied to a semi-preparative or analytical C-18 HPLC column equilibrated with a buffer containing, by volume, 70% Buffer A and 30% Buffer B (Buffer A is 0.05% trifluoroacetic acid in water and Buffer B is 0.025% trifluoroacetic acid in acetonitrile). Bound proteins were eluted using a linear gradient of 30% to 60% acetonitrile. As was previously characterized, the osteogenic activity (HPLC Pool) eluted within the concentrations of 35% to 45% acetonitrile. The HPLC Pool was assayed for total protein as estimated by absorbance at 229 nm and its osteogenic activity was measured using the rat implant assay.

25

#### EXAMPLE 2

##### Biological Activity

The induction of bone matrix was measured using a rat implant assay as generally described by Sen, Walker and Einarson (1986), in Development and Diseases of Cartilage and Bone Matrix, eds. A. Sen and T. Thornhill, 201-220, Alan R. Liss, New York; and Sampath, et al., Proc. Natl. Acad. Sci. (USA), 80, 6591-6595 (1983). Approximately 70-100 mg of inactive bone matrix (bone collagen) was mixed with an aqueous solution of osteogenic protein preparation and the

35

- 19 -

water removed by lyophilization. The dried coated granules were packed in gelatin capsules (Eli Lilly #5) and each capsule was subcutaneously implanted near the thigh muscles in each back leg of male Long Evans rats. The implanted rats were sacrificed 17 to 28 days following implantation and the implant tissue was surgically removed and placed in Bouin's Solution. The specimens were then decalcified and processed for toluidine blue stained sections. Histomorphology and percent ossification was determined by examination of the stained sections. Potency is defined by the amount of protein (mg) required for implantation with inactive bone matrix yielding at least 10% of the area of the stained sections occupied by osteoid activity.

TABLE 1  
PURIFICATION OF OSTEOGENIC FACTORS

	<u>Sample</u>	<u>Total Protein</u>	<u>Potency in Rat</u> <u>(mg/implant)</u>
20	Guanidine Extract	130,000-170,000 mg	
	10K Retentate	6,000-15,000 mg	10.0
	S-S Pool	300-900 mg	1.0
	QS Pool	70-250 mg	0.25
	Prep HPLC Pool	4-12 mg	0.05
25	CC Pool	2-5 mg	0.025
	PS Pool	0.5-1 mg	0.01
	HPLC Pool	0.01-0.05 mg	0.001

The increase in potency of the various osteogenically active protein preparations obtained using purification steps according to Example 1 is

- 20 -

shown in Table 1, above, with the HPLC Pool having a potency of 0.001 mg/implant.

### EXAMPLE 3

5                   Determination of Molecular Weights of  
                  Purified Osteogenic Factors Under  
                  Reducing and Nonreducing Conditions  
                  and Purification of Reduced Subunits

                  Purified osteogenically active protein  
10 preparation as obtained in the HPLC Pool of Example 1  
were suspended in SDS dilution buffer in the absence  
of reducing reagents (-DTT), electrophoresed on 12.5%  
or 15% SDS polyacrylamide gels and the protein bands  
visualized by silver staining. Molecular weights are  
15 determined relative to non-prestained molecular weight  
standards (Bio-Rad). This gel system revealed that  
the HPLC Pool contained protein bands which migrate  
within the molecular weight range of 31,000-34,000  
daltons (see Figure 2A).

20                   Purified osteogenically active proteins in  
the HPLC Pool were subjected to an alternative  
analytical method whereby protein subunits held  
together by disulfide bonds can be resolved by  
reduction of these bonds in SDS dilution buffer in the  
25 presence of a reducing agent (dithiothreitol or beta-  
mercaptoethanol) and electrophoresis on 12.5% or 15%  
SDS polyacrylamide gels. Molecular weights were  
determined relative to non-prestained molecular weight  
standards (Bio-Rad). In this gel system, the HPLC  
30 Pool revealed proteins migrating as two broad bands  
within the molecular weight ranges of 16,000-17,500  
and 17,500-19,000 daltons (see Figure 2B).

                  The HPLC Pool was made 6M in guanidine  
hydrochloride, 50 mM in ethanolamine and 50 mM in  
35 dithiothreitol to reduce the disulfide bonds. The

- 21 -

reduced sample was diluted at least 2 fold with either water or 0.05% trifluoroacetic acid in water and loaded onto an analytical C-18 HPLC column equilibrated with a buffer comprising, by volume, 70% Buffer A and 30% Buffer B, as described previously (Buffer A is 0.05% trifluoroacetic acid in water and Buffer B is 0.025% trifluoroacetic acid in acetonitrile). Bound proteins were eluted using a linear gradient of 30% to 60% acetonitrile in 60 minutes. Four prominent peaks of protein, designated A, B, C and D, were detected by monitoring UV absorbance at 229 nm; these eluted within the concentrations of 40% to 47% acetonitrile (see Figure 3A). When analyzed by reducing SDS gel electrophoresis followed by silver staining, the reduced subunit A migrated within the molecular weight range of 17,500-19,000 daltons, the reduced subunit B migrated within the molecular weight range of 16,000-17,500, the reduced subunit C migrated within the molecular weight range of 17,500-19,000 and the reduced subunit D migrated within the molecular weight range of 17,500-19,000 (see Figure 3B).

#### EXAMPLE 4

#### 25                   Amino Acid Sequences of Bovine Osteogenically Active Proteins P3 OF 31-34

The isolated reduced subunits purified from HPLC Pool as disclosed in Example 3, were analyzed by a gas phase sequenator (Applied Biosystems, Model 30 470A), and found to have the following amino-terminal sequences:

SEQ ID NO: 7

Subunit A: SAPGRRRQQARNRSTPAQDV

- 22 -

SEQ ID NO: 8

Subunit C: SXKHXXQRXRKKNNN

SEQ ID NO: 9

Subunit D: STGGKQRSQNRSKTPKNQEA

5 where the amino acids are represented by the well known one-letter and three-letter designations presented in Table 2 below.

<u>TABLE 2</u>			
	<u>Amino Acid</u>	<u>Three-Letter Abbreviation</u>	<u>One-Letter Symbol</u>
10	Alanine	Ala	A
	Arginine	Arg	R
	Asparagine	Asn	N
15	Aspartic Acid	Asp	D
	Cysteine	Cys	C
	Glutamine	Gln	Q
	Glutamic acid	Glu	E
	Glycine	Gly	G
20	Histidine	His	H
	Isoleucine	Ile	I
	Leucine	Leu	L
	Lysine	Lys	K
	Methionine	Met	M
25	Phenylalanine	Phe	F
	Proline	Pro	P
	Serine	Ser	S
	Threonine	Thr	T
	Tryptophan	Trp	W
30	Tyrosine	Tyr	Y
	Valine	Val	V
	Undetermined		X



- 23 -

The isolated subunit B yielded no detectable amino-terminal sequence. When subunit B was digested with Staph V8 protease, and rechromatographed by HPLC, two detectable internal fragments were isolated having the following amino acid sequences:

5 SEQ ID NO: 10

Subunit B/Staph V8: XVVLKKNYQDMV

SEQ ID NO: 11

Subunit B/Staph V8: XXXVVLKKNYQDM

10 where X represents an unassigned amino acid.

The isolated, reduced subunits purified from HPLC Pool (Example 3) were adsorbed onto polyvinylidene difluoride (PVDF) transfer membrane (Millipore, Bedford, Massachusetts), exposed to vapors from 80 mg/ml CNBr in 70% formic acid for 15 to 20 hours and sequenced using the gas phase sequenator. The following amino acid sequences are represented by the well-known one-letter designations presented in Table 2.

20 Subunit A, following cleavage with CNBr, yielded sequences from the simultaneous sequences of several fragments corresponding to the amino terminal sequence:

SEQ ID NO: 12

25 ANT: SAPGRRRQQARNRSTPAQDV

and three internal fragments:

SEQ ID NO: 13

A1: NPEYVPKXXXAPTCLNAISV

SEQ ID NO: 14

30 A2: XATNXAIVQXLVXLM

SEQ ID NO: 15

A3: XVXAXG

Subunit B, following cleavage with CNBr, yielded sequences from the simultaneous sequencing of two internal fragments:

35

- 24 -

SEQ ID NO: 16

B1: LYLDENEK

SEQ ID NO: 17

B2: VVEGXGXR

5 when compared with the sequences of fragments of subunit B cleaved with staph V8 protease, fragments B1 and B2 contain overlapping regions, allowing an extended internal sequence in subunit B:

B1: LYLDENEK (SEQ ID NO: 16)

10 Staph V8: XXKVVLKKNYQDM (SEQ ID NO: 11)

Staph V8: XVVLKKNYQDMV (SEQ ID NO: 10)

B2: VVEGXGXR (SEQ ID NO: 17)

Consensus: LYLDENEKVVVLKKNYQDMVVEGXGXR (SEQ ID NO: 18)

Subunit D, following cleavage with CNBr,  
15 yielded sequences from the simultaneous sequencing of several fragments corresponding to the amino terminal sequence:

SEQ ID NO: 19

Dnt: STGGKQRSQNRSKTPKNQEA

20 and an internal sequence:

SEQ ID NO: 20

D1: XATNHAIVQTLVHFINKETV

The isolated reduced subunit C, purified from the HPLC Pool (Example 3), was adsorbed onto a PVDF  
25 transfer membrane, subjected to 20 cycles of amino terminal sequencing using the gas phase sequenator, subjected to cleavage by CNBr vapors, and then sequenced using the gas phase sequenator. Subunit C, following cleavage with CNBr, yielded the following  
30 internal sequences:

SEQ ID NO: 21

C1: LYLXEYDXVVLXNYQ

SEQ ID NO: 22

C2: SAXXHXIVQT

- 25 -

The amino terminal and internal sequences of subunits A, B, C and D derived from bovine bone can be aligned with homologous regions from the deduced amino acid sequences of cDNA clones encoding the polypeptides designated BMP-2A, BMP-2B and Vgr-1. (Wozney, et al., Science, Vol. 242, pp. 1528-1534 (1988) and (Lyons, et al., Proceedings of the National Academy of Sciences of the U.S.A., Vol. 86, pp. 4554-4558, 1989). Comparison of the similarities and differences of the sequences of subunits B and C and the sequences of BMP-2A and BMP-2B indicate that bovine subunit B shares the same sequence as BMP-2A while bovine subunit C shares the same sequence as BMP-2B. The amino terminus of mature B is inferred from alignment of the human BMP-2A sequence with the amino acid sequences of bovine A, B, C and D, and the presence of a blocked amino terminal on bovine subunit B as described above, presumably resulting from cyclization of an N-terminal glutamine to form a non-sequenceable pyroglutamic acid. Alignment of the sequences of subunit A with those of Vgr-1 indicates a 90% homology.

#### EXAMPLE 5

#### 25                   Subunit Compositions of Purified Osteogenically Active Proteins P3 OF 31-34

Individual fractions, eluting within the HPLC pool (Example 1) and containing the osteogenically active proteins P3 OF 31-34 (Figure 4A), were analyzed by SDS polyacrylamide gel electrophoresis in the absence of reducing reagents (Figure 4B). Figure 4A shows the elution profile obtained by high performance liquid chromatography, on a reverse phase C18 column of the PS Pool. Figure 4B shows non-reducing SDS polyacrylamide gel electrophoresis of P3 OF 31-34

- 26 -

proteins eluting in fractions 26, 27 and 28 from the reverse phase HPLC of the PS Pool. These individual fractions were further analyzed (as described in Example 3) by reduction of the disulfide bonds with 50 mM dithiothreitol in 50 mM ethanolamine and 6 M guanidine hydrochloride and chromatography on a C18 HPLC column (Figure 5). Figure 5A shows the isolation and identification of subunits of the P3 of 31-34 proteins eluting in fraction 26 from the reverse phase HPLC of the PS Pool, while Figure 5B shows the isolation and identification of P3 OF 31-34 proteins eluting in fraction 28. Subunits A, B, C and D are designated by the solid lines in the figures. Fraction 26, the sample comprising the lowermost band of the P3 OF 31-34 region (Band I of Figure 4B), was found to contain predominantly subunits B and D with smaller amounts of subunits A and C. Fraction 28, the sample comprising predominantly the uppermost band of the P3 OF 31-34 region (Band II of Figure 4B), together with a small amount of Band I, was found to contain increased amounts of subunits A and C, and a decreased amount of subunit D.

These individual fractions, eluting within the HPLC pool and containing the osteogenically active proteins P3 of 31-34, were electrophoresed on 12.5% SDS polyacrylamide gels in the absence of reducing reagent (-DTT), electrophoretically transferred to polyvinylidene difluoride (PVDF) transfer membranes in the presence of 10% methanol, 10 mM cyclohexylamino-1-propanesulfonic acid, pH 10-11, at 0.5 amp for 15 to 30 minutes, and visualized by staining with Coomassie Brilliant Blue R250. Individual protein bands in the region of P3 OF 31-34 defined here as Band I (lower) and Band II (upper), were sliced from the membrane and subjected first to N-terminal sequencing, and then to

- 27 -

internal sequencing following treatment with CNBr as described in Example 4. These procedures revealed the following sequence for Band I and II:

	<u>Band Sequenced</u>	<u>Sequences</u>	<u>Subunit Identity</u>
5	Band I Internal	XATNXAIVQTL (SEQ ID NO: 23)	D
		LYLDEXEXVVL (SEQ ID NO: 24)	B
10	Band II N-Terminal	XXXGRXRQ (SEQ ID NO: 25)	A
15		XXGGXQR (SEQ ID NO: 26)	D
	Band II Internal	LYLDXNXXVVLXN (SEQ ID NO: 27)	B
20		XPEXVPX (SEQ ID NO: 28)	A

where the amino acids are represented by the well-known one-letter designations presented in Table 2.

25           These results indicated that Band I, the lowermost band of the P3 OF 31-34 proteins, contains predominantly subunits D and B, and that Band II, the uppermost band of the P3 of 31-34 proteins, contains predominantly subunits A and B. These compositions, as well as the observation that these subunits are  
30 purified as disulfide-linked dimers in the purified P3 OF 31-34 proteins (Example 3), indicate that subunits D and B may be disulfide-linked as a heterodimer, and that subunits A and B may be disulfide-linked as  
35 another heterodimer.

- 28 -

EXAMPLE 6Osteogenic Compositions for Implantation

The osteogenic preparations of the invention may be used to prepare osteogenic compositions for implantation into mammals. The osteogenic protein may be admixed with one or more of a variety of physiologically acceptable matrices. Such matrices may be resorbable, non-resorbable or partially resorbable. Resorbable matrices include polylactic acid polycaprolactic acid, polyglycolic acid, collagen, plaster of paris and a variety of thermoplastic polymer materials. Non-resorbable materials include hydroxyapatite and partially resorbable materials include matrices such as tricalcium phosphate. The osteogenic protein may be adsorbed onto the matrix material which can be either in a granular or solid form. The osteogenic composition may then be dried by lyophilization.

20

EXAMPLE 7Device Coated With Osteogenic Preparations

In this example, the Prep HPLC Pool of Example 1 containing the osteogenically active proteins was used to form osteogenically active devices useful for the healing of bone defects. The devices were prepared by absorbing the Prep HPLC Pool onto solid delivery matrices comprising either a porous hydroxyapatite disc (Interpore 200, Interpore International, Irvine, CA) or a porous polylactic acid disc (DRILAC, OSMED Incorporated, Costa Mesa, CA). The discs were 8 to 10 mm in diameter and 3 mm thick and were coated with 0.2 to 0.3 mg of the Prep HPLC Pool which was dried onto the matrix by lyophilization. The device may then be sterilized by gamma-irradiation with as much as 3.3 to 3.5 M rads or

- 29 -

other suitable means. The devices comprising the osteogenic preparation and the matrix were implanted into trephine defects created in New Zealand Albino Female rabbits, weighing 2.5 to 3.0 kg. Specifically, 5 test devices either coated with the osteogenic preparation or not coated with the osteogenic preparation were surgically implanted into the calvaria using appropriate aseptic surgical techniques. Animals were anesthetized with an 10 intramuscular injection of Ketamine and Xylazine. Following a midline incision, the calvarium was exposed and two trephine holes (one on each side of the midline) 5 mm posterior to the orbits, 8-10 mm in diameter and to the depth of the dura were cut into 15 the calvarium. Trephine defects were created using a Stille cranial drill, exercising great care not to injure the dura. A test device was implanted into one trephine hole while the trephine hole on the opposite side was left empty. Following surgical implantation, 20 antibiotic prophylaxis with penicillin and streptomycin was administered. The animals were followed daily by clinical observations. At explant, the calvaria was removed en block. The specimens were fixed in 10% buffered formalin, decalcified and 25 processed for hematoxylin and eosin stained sections. Histomorphology and qualitative determination of percent ossification was determined by examination of the stained sections (see Table 3 below). The percent area of activity is estimated by eye from the fields 30 of view, or fraction of fields of view, of newly formed bone matrix as compared to the total fields of view not occupied by the matrix in the entire full cross section.

- 30 -

TABLE 3

% OSSIFICATION IN DEVICES  
IMPLANTED INTO RABBIT TREPHINE DEFECTS

5	Test Device	Time of Explant	
		6 weeks	12 weeks
	Uncoated Hydroxyapatite	<10%	<25%
	Uncoated Polylactic Acid	<10%	<10%
	Hydroxyapatite Coated with	>90%	>90%
10	Osteogenic Preparation		
	Polylactic Acid Coated with	>90%	>90%
	Osteogenic Preparation		
	Hydroxyapatite Coated with	>75%	>90%
	Osteogenic Preparation		
15	and Treated with		
	Gamma-Irradiation		

EXAMPLE 8

## Polyclonal Antisera Against

20 Osteogenically Active Proteins P3 OF 31-34

Antisera specific for proteins containing subunits A or D were generated against the synthetic peptides obtained from Peninsula Laboratories, Belmont, California. The synthetic peptides comprised 25 branched lysine heptamers to which were linked either eight peptides having the amino acid sequence set out in SEQ ID NO: 29 or eight peptides having the amino acid sequence set out in SEQ ID NO: 30. The peptides were linked to the heptamers by their carboxy termini.



- 31 -

	<u>Antigen</u>	<u>Antibody Designation</u>
	SEQ ID NO: 29	
	Subunit A            SAPGRRRQQARNRSTPAQDV	AbANT
5	SEQ ID NO: 30	
	Subunit D            STGGKRRSQNRSKTPKNQEA	AbDnt

Antisera were generated in rabbits (3- to 6-month-old New Zealand white male) using standard procedures of subcutaneous injections, first in complete Freund's adjuvant, and later (at 14 and 21 days) in incomplete Freund's adjuvant followed by bleeding and preparation of antisera.

The AbANT and AbDnt antisera were cross-reactive with the synthetic peptide antigens when used in an ELISA format as described in Example 14, and the reduced subunits A and D when used in a Western Blot format as described in Example 13. The AbANT and AbDnt antisera were also cross-reactive with the osteogenically active proteins P3 OF 31-34 when used in either an ELISA or Western Blot format. These antisera were not cross-reactive with any presently defined form of subunit B or subunit C as determined by Western Blot analysis against purified subunit B and subunit C.

A fusion protein of E. coli ribolukinase fused to the 129 amino acid sequence of the carboxy-terminal region of BMP-2A (Wozney, et al., Science, 242, 1528-1534 (1988)) was constructed, expressed and purified essentially as described by Lai, et al., PCT/US86/00131. A synthetic gene encoding the polypeptide designated BMP-2A and the 15 amino acid residues preceding this sequence (Wozney, et al., Science, 242, 1528-1534 (1988)) was

- 32 -

constructed using oligonucleotides designed with codons preferred by E. coli. This synthetic gene was cloned into a derivative of the pING1 vector, thereby yielding a fusion protein of ribulokinase fused to the 129 amino acid sequence of the carboxy terminal region of BMP-2A (homologous to subunit B). This construct was transformed into E. coli strain MC1061 and, following induction with 0.5% arabinose, yielded the ribulokinase-B fusion protein produced in inclusion bodies. Inclusion bodies were isolated and extensively washed, yielding a purified preparation of the ribulokinase-B fusion protein.

Antisera specific for subunit B were generated by formic acid cleavage of the ribulokinase-B fusion protein to produce separate ribulokinase and subunit B proteins. The fusion protein was cleaved using 70% formic acid at 37°C for 48 to 72 hours. The acid-cleaved proteins were lyophilized, reduced, and carboxymethylated. The subunit B was isolated by passage through a Q-Sepharose column equilibrated at 50 mM MES pH 6.5, 6M urea, conductivity 10 mS/cm; and then binding to an S-Sepharose column using the same MES buffer. The subunit B bound to the S-Sepharose and was eluted by 1.0M NaCl, desalted, and further purified on reverse-phase HPLC eluting in the range 35 to 45% acetonitrile. The isolated subunit B was injected into rabbits as described above. This antisera is designated AbB. The AbB antisera was cross reactive with the isolated B subunit and with the osteogenically active proteins when used in a Western format, as described in Example 13. This antisera was not cross reactive with any presently defined form of subunit A or D as determined by Western Blot.

35

- 33 -

EXAMPLE 9Cloning of cDNA For Human Subunit D

A variety of techniques can be used to identify sequences of human DNA encoding proteins homologous to a particular sequenced protein. Such methods include the screening of human DNA, human genomic libraries and human cDNA libraries. A variety of oligonucleotide probes can be used including probes exactly complementary to the human DNA sequence, mixtures of probes complementary to all or some of the possible DNA sequences coding for the particular protein sequence, degenerate probes synthesized such that all possible sequences complementary to all possible DNA sequences coding for the particular protein sequence are represented, and degenerate probes synthesized using nucleotide analogues such as deoxyinosine triphosphate. In this example, the polymerase chain reaction (PCR) technique was used to amplify sequences of human cDNA encoding proteins homologous to subunit D of bovine osteogenically active preparations P3 OF 31-34.

Preparation of cDNA From U-2 OS Cells

The human osteogenic sarcoma cell line U-2 OS was obtained from the ATCC (American Type Culture Collection, Rockville, MD) and maintained in McCoy's 5a medium supplemented with 10% fetal calf serum and 1% glutamine/penicillin/streptomycin. Unless otherwise described, DNA manipulations, definition of terms, and compositions of buffers and solutions are described by Maniatis, T., et al., Molecular Cloning: A Laboratory Manual (1982). Poly (A)<sup>+</sup> RNA was isolated from U-2 OS cells using the Fast Track-mRNA isolation kit from Invitrogen (San Diego, CA). A first strand cDNA copy of the mRNA was generated with oligo (dT) as the primer using the AMV Reverse

- 34 -

Transcriptase System I from Bethesda Research Laboratories (BRL, Gaithersburg, MD). Each reaction used 1  $\mu$ g of poly (A)<sup>+</sup> RNA which was reverse transcribed into first strand cDNA that was used as  
 5 template in eight separate polymerase chain reaction (PCR) DNA amplification reactions. Following cDNA synthesis, RNA was hydrolyzed by treatment with 50 mM NaOH at 65°C, followed by neutralization in 0.2 N HCl.

PCR Amplification

10 Polymerase chain reaction (PCR), as described in R.K. Saiki, et al., Science 239:487-491 (1988), was used to amplify DNA from U-2 OS cDNA prepared as described above. Oligonucleotide primers for PCR were synthesized on an automated DNA synthesizer and were  
 15 derived from the amino terminal and internal amino acid sequences of bovine subunit D. The 5' PCR primer, designated ODM-1, corresponded to sequence set out in SEQ ID NO: 31 of the first 11 amino acids from the amino terminus of bovine subunit D, namely  
 20 STGGKQRSQNR. This 32-mer contained all possible combinations of nucleotide sequence coding for this sequence of amino acids and was greater than 4-million-fold degenerate. The nucleotide sequence of ODM-1 was

25 SEQ ID NO: 32

5'-[T/A][C/G]NACNGGNGGNAA  
 [G/A]CA[G/A][C/A]GN[T/A]  
 [C/G]NCA[G/A]AA[C/T][C/A]G-3'.

30 Bracketed nucleotides are alternatives, and "N" means all alternatives (A, C, T and G).

The 3' PCR primer corresponded to an internal sequence of bovine subunit D set out in SEQ ID NO: 33, NHAIVQTLVHFIN, and was synthesized as the inverse and complementary sequence. This oligonucleotide  
 35 primer was designated ODB-1 and had the sequence

- 35 -

SEQ ID NO: 34

5'-TTTTTTTGGATCC[G/A]TTXAT[G/A]  
AA[G/A]TGXACXA[G/A]XGT[C/T]TGXACXATXG  
C[G/A]TG[G/A]TT-3'.

- 5 Bracketed nucleotides are alternatives, and "X"  
represents the nucleotide analog  
deoxyinosinetriphosphate (dITP), which was used in all  
positions where all four of the nucleotides (A, C, T  
or G) were possible. (In the Sequence Listing for SEQ  
10 ID NO: 34 incorporated herewith, dITP is designated  
as "N.") The sequence is preceded on the 5' end by a  
string of eight T's, followed by the sequence GGATCC  
which designates a BamHI recognition site, leaving a  
stretch of 39 nucleotides corresponding to the  
15 internal amino acid sequence of bovine subunit D.

- Amplification of DNA sequences coding  
proteins homologous to bovine subunit D using these  
two primers was accomplished using the Perkin-Elmer  
Cetus Gene Amp DNA Amplification Reagent Kit (obtained  
20 either from Parkin-Elmer Cetus, Norwalk, CT, or United  
States Biochemical Corporation, Cleveland, OH). The  
PCR reaction contained 1  $\mu$ g of each primer ODM-1 and  
ODB-1, 1/8 of the synthesized U-2 OS first strand cDNA  
(approximately 25-50 ng), 200 micro M of each dNTP,  
25 and 2.5U Ampli-Tag DNA Polymerase in the kit-supplied  
reaction buffer of 50 mM KCl, 1.5 mM MgCl<sub>2</sub>, 0.1% (w/v)  
gelatin. PCR was performed for 30 cycles consisting  
of 1.5 minutes denaturation at 94°C, 2 minutes  
annealing at 50°C and 3 minutes elongation at 72°C.  
30 After the 30 cycles, a final 10-minute elongation at  
72°C is performed.

- The PCR products were analyzed by agarose gel  
electrophoresis, which revealed a major band of  
amplified DNA of approximately 300 bp. A Southern  
35 Blot was performed in which the DNA in the gel was

- 36 -

transferred to a Nytran nylon membrane (Schleicher and Schuell, Keene, NH) using an LKB Vacugene Vacuum Blotting Unit, and then the DNA was UV-crosslinked to the membrane using a Stratalinker (Stratagene, LaJolla, CA). The membrane was probed for amplified sequences encoding proteins homologous to bovine subunit D using a probe corresponding to the amino acid sequence set out in SEQ ID NO: 35, KTPKNQEALR. This sequence is found near the amino terminus of bovine subunit D, following the sequence used to construct the 5' PCR primer. This probe would therefore hybridize to amplified sequences that encode proteins homologous to bovine subunit D without overlapping either of the two primers used in the amplification. This 29-mer probe was designated ODibb and had the sequence

SEQ ID NO: 36

AAXACXCCXAA[G/A]AA[C/T]CAXGA[G/A]GCX[C/T]TX[C/A]G

where bracketed nucleotides are alternative and "X" represents dITP, which was used in positions where all four nucleotides (A, C, T or G) were possible. (In the Sequence Listing for SEQ ID NO: 36 incorporated herewith, dITP is designated as "N.") The Southern Blot was prehybridized at 42°C in 5xSSPE (SSPE = 0.18 M NaCl, 0.01 M NaH<sub>2</sub>PO<sub>4</sub>, 0.001 M EDTA, pH 7.4), 0.5% SDS, 3x Denhardt's, 100 µg/ml salmon sperm DNA, then hybridized at 42°C in 6xSSPE, 0.5% SDS to the ODibb probe which had been radioactively labelled using polynucleotide kinase and  $\gamma$ [<sup>32</sup>P]ATP. The blot was washed at 42°C in 2xSSC (SSC = 0.15 M NaCl, 0.015 M Na Citrate, pH 7.0), 0.1% SDS. Autoradiography of the blot showed that ODibb hybridized specifically to the 300 bp PCR-amplified DNA.

- 37 -

5' phosphates were added to the blunt-ended PCR product using kinase and ATP, and the DNA was then ligated into the SmaI cut (blunt end) site of the vector pT7T3 18U (Pharmacia, Piscataway, NJ).

5 Following digestion with SmaI to linearize any relegated vector, the recombinant plasmid DNA was used to transform E. coli TG1 cells. Several transformants were picked and used to purify plasmid DNA by a mini-lysate procedure. The size of the insert contained in  
10 these plasmids was confirmed to be 300 bp by restriction analysis.

Cloned cDNAs from seven different transformants were sequenced by dideoxy sequencing methods (Sequenase, United States Biochemical Corp.).  
15 The sequences of three of these clones were identical to each other and, when translated to amino acid sequence, it was confirmed that they were homologous to the sequence of bovine subunit D.

20 Cloning and Nucleotide Sequence  
of cDNA for Human Mature D

cDNA libraries were constructed from poly (A)<sup>+</sup> RNA isolated from the human osteosarcoma cell line U-2 OS in  $\lambda$ gt10 vectors. Libraries were constructed using oligo (dT) as primer, using kits  
25 obtained either from Amersham (cDNA) Synthesis System Plus and cDNA Cloning System  $\lambda$ gt10) or Invitrogen (The Librarian X) according to manufacturers' protocols. A total of approximately 850,000 recombinant plaques generated in two libraries were screened with a  
30 [<sup>32</sup>P]dCTP-labeled random-primer generated probe designated OD. This OD probe was an approximately 300 bp fragment of DNA, amplified by PCR from one of the hOD clones, using PCR primers corresponding to the exact sequences from the regions of the original  
35 degenerate PCR primers, ODM-1 and ODB-1, which were

- 38 -

present in this clone. This OD probe therefore contained at least 214 bp of exact sequence for human subunit D. Duplicate nylon replica filters (Hybond N, Amersham) were hybridized with OD at 60°C in 6xSSPE, 5xDenhardt's, 0.5% SDS, 0.05 mg/ml sheared salmon sperm DNA for 16 to 40 hours, following a 1 hour prehybridization in the same solution without probe. Filters were washed two to three times for 10 minutes each at room temperature in 2xSSC, 0.1% SDS, followed by successive 1 hour washes at 65°C in 2xSSC, 0.1% SDS and 1xSSC, 0.1% SDS. Filters were subjected to autoradiography for 1 to 4 days. The OD probe hybridized to several positives which appeared on duplicate filters, three of which were identified by PCR (following plaque purification) to contain sequences corresponding to human subunit D. The DNA inserts contained in these three phage clones were amplified by PCR, essentially as described above, using primers corresponding to the sequence of the  $\lambda$ gt10 vector flanking the inserts; namely,  $\lambda$ gt10F with the sequence

SEQ ID NO: 37

5'-GAGCAAGTTCAGCCTGGTTAAGTCC-3'

and  $\lambda$ gt10R with the sequence

25 SEQ ID NO: 38

5'-TGGCTTATGAGTATTTCTTCCAGGG-3'.

Southern Blots of PCR-amplified DNA were probed with an oligonucleotide probe designated ODUC-1, labeled with [ $^{32}$ P]ATP and polynucleotide kinase, which corresponds to the reverse and complementary sequence between nucleotides 38 and 67, is specific for the sequence of subunit D, and has the sequence

30 SEQ ID NO: 39

5'-GTCGCTGCTGCTGTTCTCTGCCACGTTGGC-3'.



- 39 -

The PCR amplified DNA from the longest of these three cDNA clones was subcloned in the plasmid vector pT7T3 18U and sequenced. This clone contained the sequence of the entire coding region corresponding to human mature D. This sequence is shown in Figure 6 along with the corresponding amino acid sequence.

Cloning of human prepro D

A human placental cDNA library in  $\lambda$ gtII (Clontech HL1075b) was screened with the random primer labelled OD probe as described above. One positive hybridizing plaque was identified that was 1.6kb long and this clone was designated pOD601. This clone contained the entire coding region of mature D and most of the coding region of prepro D, but was still short of full length by approximately 240 bp at the 5' end. The remaining sequence encoding the 5' end of prepro D was obtained by PCR amplification essentially as described above, using the primers ODP-Sal:

SEQ ID NO: 40

20 5'-GAATTCGTCGACATGCACGTGCGCTCA-3'

and ODPP-3:

SEQ ID NO: 41

5'-CCATGGCGTTGTACAGGTCCAG-3'.

OPD-Sal introduced a SalI site at the 5' end of prepro D, while ODPP-3 corresponded to the sequence of prepro D near the 5' end of pOD601, encompassing a naturally occurring NcoI site.

- 40 -

EXAMPLE 10

Cloning of cDNA for

Human Subunit BCloning of Human Mature B

5 DNA comprising the sequence of 342  
nucleotides representing human mature B was obtained  
by PCR amplification of DNA generated by reverse  
transcription of U-2 OS poly (A)+ RNA. The amino  
terminus of mature B was inferred from alignment of  
10 the human BMP-2A sequence with the amino acid  
sequences of bovine A, B, C, and D, and the presence  
of a blocked amino terminal on bovine subunit B as  
described in Example 4, presumably resulting from  
cyclization of an N-terminal glutamine to form a  
15 non-sequenceable pyroglutamic acid.

PCR primers corresponded to the sequences  
obtained from Wang, et al., PCT US87/01537. The 5'  
PCR primer (a 27-mer designated OB-NM) encoded amino  
acids set out in SEQ ID NO: 42, QAKHKQRKR, and had  
20 the nucleotide sequence

SEQ ID NO: 43

5'-CAAGCCAAACACAAACAGCGGAAACGC-3'.

The 3' PCR primer (a 37-mer designated OB-CP) encoded  
amino acids set out in SEQ ID NO: 63, VEGCGCR, and  
25 was synthesized as the inverse and complementary  
sequence, preceded on the 5' end by a stop codon, an  
SstII site, and a HindIII site. The nucleotide  
sequence of OB-CP was

SEQ ID NO: 44

30 5'-AAGCTTCCGCGGCTAGCGACACCCACAACCCTCCACA-3'.

The sequence of PCR-amplified human mature B is shown  
in Figure 7 and SEQ ID NOS: 3 and 4 along with the  
corresponding amino acid sequence.

- 41 -

Cloning of Human Prepro B

Cloning of cDNA encoding prepro B was accomplished by PCR amplification from U2-OS mRNA essentially as described above, except that Vent DNA polymerase (New England Biolabs) was used instead of Taq polymerase, and the denaturation step was carried out at 96°C. The primers used for PCR were OB-PPN:  
SEQ ID NO: 45

5'-ACTGTCGACATGGTGGCCGGGACCCG-3'

10 and OB-PPC:

SEQ ID NO: 46

5'-ACGTTTTTCTCTTTTGTGGAGAGGAT-3'

which were successfully used to amplify an 850 bp fragment corresponding to the entire coding region of prepro B.  
15

EXAMPLE 11

Construction of Mammalian  
Expression Vectors for the Production  
20 Of Human Subunits B and D

Plasmid vectors that contain cDNA genes for subunits B and D were constructed based on vectors originally developed for expression of the antibody heavy chain genes (Better, et al., PCT US89/03842):  
25 pING1714 and pING2237N (which is a derivative of pING2227 containing a gene for dhfr selection and a unique NotI site). These vectors have a number of features useful for regulating gene expression in mammalian cells.

30 Transcriptional activity is controlled by the heavy chain mouse enhancer derived from M13 M8alphaRX12 (Robinson, et al., PCT US86/02269) located adjacent to the mouse Abelson virus LTR promoter/enhancer (Abl) derived from pelin2 (provided  
35 by Dr. Owen Witte, UCLA, and described by Reddy, et

- 42 -

al., Proc. Natl. Acad. Sci. (USA), 80, 3623 (1983)) in  
pING2237N and by the Abl in pING1714. Downstream of  
the Abl promoter is the 16S splice donor and acceptor  
segment from SV40 in both vectors, which was excised  
5 from pUC12/pL1 (Robinson, et al., PCT US86/02269).  
The expressed genes were located just downstream of  
the splice junction. At the 3' end of the gene in  
pING2237N, the human genomic gamma-1 polyadenylation  
sequence has been cloned as a 1187-bp DNA fragment  
10 described by Ellison, et al., Nucl. Acids Res., 10,  
4071 (1982).

The remainder of the vector is similar to  
pSV2, containing a selectable marker (neo or dhfr)  
under the control of the SV40 early promoter and  
15 sequences of pBR322 necessary for growth in E. coli.  
Plasmid pING2237N contains a unique NotI site located  
in the pBR322-derived sequences that was introduced at  
the unique AatII site by cutting with AatII and  
ligating the annealed oligonucleotides

20 SEQ ID NO: 47

5'-TGAAGCGGCCGCAACAGACGT-3'

and

SEQ ID NO: 48

5'-CTGTTGCGGCCGCTTCAACGT-3'.

25 This created a vector that could be linearized with  
NotI prior to transfection into mammalian cells. The  
oligonucleotides were chosen, and resulting clones  
were selected such that the AatII site was regenerated  
on one side of the NotI site only.

30 A useful feature of the vector pING1714 (and  
pING2237N) is that it contains unique SalI and SstII  
sites into which genes such as those encoding the  
subunits B and D can be cloned. The SalI site is  
positioned so that insertion at this site generates a  
35 transcriptional fusion controlled by the

- 43 -

enhancer/promoter region. The SstII site is located in the CH3 domain of the heavy chain gene.

Construction of Vectors for

Expression of Subunits B and D in Animal Cells

5 DNA representing the entire protein region of subunit C (prepro plus mature) and consisting of 1224 nucleotides was obtained by PCR amplification of DNA generated by reverse transcription of U-2 OS poly (A)<sup>+</sup> RNA. PCR primers corresponded to the sequences  
10 obtained from Wang, et al., PCT US87/01537. The 5' PCR primer (a 37-mer designated OC-NP) encoded amino acids set out in SEQ ID NO: 49, MIPGNRML, and was preceded on the 5' end by a SalI site and an EcoRI site. OC-NP had the nucleotide sequence

15 SEQ ID NO: 50

5'-GAATTCGTCGACATGATTCCTGGTACCGAATGCTGA-3'.

The 3' PCR primer (a 37-mer designated OC-CP) encoded the amino acid sequence set out in SEQ ID NO: 51, VEGCGCR, and was synthesized as the inverse and  
20 complementary sequenced, preceded on the 5' end by a stop codon, an SstII site, and a HindIII site. The nucleotide sequence of OP-CP was

SEQ ID NO: 52

5'-AAGCTTCCGCGGCTCAGCGGCACCCACATCCCTCTACT-3'.

25 The sequence of PCR-amplified human prepro and mature C is shown in Figure 8 along with the corresponding amino acid sequence. The amino terminus of mature C is inferred from alignment of the human BMP-2B sequence with the amino terminal sequence of bovine C.  
30 The PCR-amplified gene was cut with SalI and SstII and cloned into pING1714. The resulting plasmid pING3900 still contained about 470 bp of DNA from the C-terminal domain of the heavy chain constant region between the end of the C gene and the gamma-1  
35 polyadenylation sequence.

- 44 -

To eliminate these sequences and construct a vector with a unique NotI site, pING3900 served as the template for the construction of two other vectors. A three-piece ligation was performed with the SalI to BglII vector fragment (containing the NotI site) from pING2237N and the SalI to SstII and SstII to BglII fragments from pING3900, generating pING3901. This vector then contained the C gene and a unique NotI site, yet still contained the heavy chain gene segment. To remove this segment, pING3901 was cut with AatII and BamHI and the vector fragment was isolated. Concurrently, pING3901 was cut with AatII and SstII, and the fragment containing the enhancer/promoter, 16S splice and the C gene was purified. The genomic heavy chain polyadenylation region was amplified from pING2237N by PCR with the primers

SEQ ID NO: 53

5'-ACTACCGCGGTAAATGAGTGCGACGG-3'

20 and

SEQ ID NO: 54

5'-CACTGCATTCTAGTTGTGGT-3'.

The former primer introduced an SstII site at its 5' end while the latter primer is located in the vector sequences downstream of the BamHI site. The PCR-amplified fragment was cut with SstII and BamHI, and the three fragments were ligated to generate the plasmid pING3902.

Plasmid pING3902 contains unique SalI and SstII sites and was used to construct mammalian expression vectors for genes encoding subunits B and D. The gene sequences encoding the mature subunits B and D (FIG. 7 and 6, respectively) were amplified by PCR to yield a blunt end at the 5' end and contain an

- 45 -

SstII site just following the termination codon of the genes.

## Primers

SEQ ID NO: 55

5'-CAAGCCAAACACAAACAGCGGAAACGC-3'

and

SEQ ID NO: 56

5'-AAGCTTCCGCGGCTAGCGACACCCACAACCCTCCACA-3'

were used to amplify the coding sequence for mature B.

10 Primers

SEQ ID NO: 57

5'-TCCACGGGGAGCAAACAGCGCA-3'

and

SEQ ID NO: 58

15 5'-CATACCGGGAGCTAGTGGCAGCCACA-3'

were used to amplify the coding sequence for mature D.

These fragments were each digested with SstII.

Likewise, the prepro C gene segment (ppC) shown in FIG. 8 was amplified from first-strand cDNA from U-2 OS mRNA by PCR with primers

20 from U-2 OS mRNA by PCR with primers

SEQ ID NO: 59

5'-GAATTCGTGACATGATTCTGGTAACCGAATGCTGA-3'

and

SEQ ID NO: 60

25 5'-ACGCTTGGCCCTCCGGCGTCGGGTCAA-3'

so that it contained a SalI restriction site just upstream of the initiation codon ATG and a blunt end at its 3' end. This fragment was digested with SalI.

A three piece ligation with the prepro C gene fragment, the mature B gene fragment and the purified vector fragment of pING3902, resulting from digestion with SalI and SstII, yielded plasmid pING3904 containing the ppC-mature B gene.

A three piece ligation with the prepro C gene fragment, the mature D gene fragment and the purified

35

- 46 -

vector fragment of pING3902, resulting from digestion with SalI and SstII, yielded plasmid pING3906 containing the ppC-mature D gene.

Construction of Vectors with an  
Alternate Drug Resistance Gene

5 Additional vectors were constructed for mammalian gene expression that differ from those described above, only in the selectable drug resistance gene. Plasmid pING3005 is similar to  
10 pING1714 except that it contains the xanthine-guanine phosphoribosyl transferase (gpt) gene instead of the neomycin phosphotransferase gene (neo). Plasmid pING3906 was cut with BglII, treated with calf  
15 intestinal alkaline phosphatase (CIAP), cut with SalI, and the vector fragment was purified. Plasmid pING3005 was cut with BamHI plus BglII, and the DNA fragment containing the gpt gene was purified.

These two fragments were ligated to the purified B and D gene fragments from pING3904 and  
20 pING3906, respectively, that had been excised with BamHI, treated with CIAP, and cut with SalI. These ligations generated plasmids pING3918 (B) and pING3919 (D) both containing the gpt selectable marker.

These plasmids were transfected into  
25 mammalian cells along with vectors containing the neo marker either together or sequentially to generate cell lines producing combinations of heterologous genes.

Construction of Vectors for the Expression  
30 of B and D With Homologous Prepro Sequences

To construct prepro B-mature B expression vectors, the 850 bp fragment corresponding to prepro B described above was digested with SalI, a site introduced by the 5' PCR primer, and NcoI, a site  
35 within the prepro sequence; the resulting 680 bp



- 47 -

fragment was purified. To obtain a fragment containing the remainder of the prepro and the mature sequence of B, a DNA fragment was PCR amplified from U2-OS mRNA using the primers PPOB-2, located upstream  
5 of the NcoI site

SEQ ID NO: 61

(primer sequence 5'-TTTTTCCAGT  
CTTTTGGACACCAGGTTGG-3'),

and OB-CP, which introduced an SstII site at the end  
10 of the mature region

SEQ ID NO: 62

(primer sequence 5'-AAGCTTCGCGGCTAG  
CGACACCCACAACCCTCCACA-3').

This fragment was digested with NcoI and SstII and  
15 purified. A 3-piece ligation was performed with the  
SalI-NcoI and NcoI-SstII fragments just described and  
the SalI-SstII vector fragment from pING3920  
(identical to the corresponding vector segment from  
pING3902) to generate pING4207 (gpt gene). To  
20 construct a vector with dhfr instead of gpt, the ClaI-  
DraIII fragment of pING4207 containing the entire B  
gene was cloned into the ClaI-DraIII vector fragment  
of pMB27, a vector essentially similar to pING3902  
except that it contained the dhfr gene. The resulting  
25 construct was called pING4206.

To construct prepro D- mature D expression  
vectors, the following 4 fragments were ligated  
together: (1) the 270 bp SalI-NcoI fragment from the  
5' end of prepro D, generated by PCR using primers  
30 ODP-Sal and ODPP-3 as described above; (2) an 850 bp  
NcoI-AlwNI fragment from the cDNA clone pOD601; (3) a  
150 bp AlwNI-SstII fragment corresponding to the end  
of mature D excised from pING3919; and (4) the SalI-  
SstII vector fragment from pING3920. The resulting  
35 vector was designated pING4120 and had gpt marker.

- 48 -

To construct a single vector for the simultaneous coexpression of B and D, plasmid pING4206 (B gene) was linearized at the unique AatII site and ligated to an AatII fragment from pING4120 containing the entire D gene, yielding the 2-gene vector pING4121 (dhfr).

#### EXAMPLE 12

#### Expression of Human Osteogenically Active Proteins from Animal Cells

According to this example, various osteogenically active proteins were expressed from animal cells including B and D monomers, B/B and D/D homodimers and the B/D heterodimer.

#### Stable Transfection of CHO K-1 Cells for the Production Of Homodimers of Human Subunits D or B

The cell line CHO K-1 (ATCC CRL 61) was grown in Ham's F12 medium plus 10% fetal bovine serum. The medium is supplemented with glutamine/penicillin/streptomycin (Irvine Scientific, Irvine, California).

The cells were transfected using the calcium phosphate method of Wigler, et al., Cell, 11, 223 (1977). Following the calcium phosphate treatment, the cells are plated in T150 flasks, and transfectants were obtained by growth in the presence of selective medium. Untransformed cells were removed during successive feedings with selective medium and, at 10 days to 2 weeks, only microcolonies of transfected cells were observed. G418 selection was used at 0.6 mg/ml. Mycophenolic acid was used at 24  $\mu$ g/ml plus 0.25 mg/ml xanthine.

Cell lines producing subunit D or B were obtained as described below. The expression plasmids pING3906 or pING3904 was digested with NotI and

- 49 -

transfected separately into the CHO K-1 cells to yield G418-resistant cells. The transfectants were grown in T-flasks, trypsinized and subcloned. The subclones were screened for the presence of D-specific or B-specific messenger RNA isolated as described by White, J. Biol. Chem., 257, 8569 (1982) or Gough, Anal. Biochem., 173, 93 (1988), and probed on slot blots with <sup>32</sup>[P]-labeled D-specific or B-specific DNA.

Those cell lines that were identified as producing the highest levels of mRNA were expanded and grown in Ham's F12 medium containing 10% FBS and then shifted into serum-free (HB-CHO, Irvine Scientific) or protein-free medium (PFHM, Gibco) for the production of D or B.

15 **Stable Transfection of**  
CHO K-1 Cells for the Production of  
Mixtures of Human Subunits D and B

According to the invention, cell lines to be transformed with genes encoding both subunit B and subunit D can be transformed according to a variety of methods including, but not necessarily limited to (1) co-transformation with two genes on two vectors at once (2) sequential transformation first with one gene and then another; and (3) transformation with two genes on the same vector.

To obtain cell lines which produce mixtures of subunits D and B, clones of D-producing transfectants which were transfected with the plasmid containing the neo selectable marker (pING3906) were transfected according to the calcium phosphate method with the plasmid constructed with the gpt selective marker containing the gene encoding the B subunit (pING3918). G418- and MPA-resistant transfectants were then screened for the production of B- and D-specific mRNA. Cell lines that expressed both mRNAs

- 50 -

were grown in large volumes in Ham's F12 plus 10% FBS and then shifted into serum-free or protein-free medium for the purpose of producing B/D dimers. One such cell line has been designated C1131. Cell line  
5 C1131 has been deposited with the American Type Culture Collection, 12301 Parklawn Drive, Rockville, MD 20852, and has been given designation A.T.C.C. CRL 10784.

An alternative method to obtain cell lines  
10 which produce mixtures of subunits B and D, involved co-transfection of NotI-digested pING3904 and pING3906 into CHO cells to give G418-resistant cells. Transfectants were grown in T-flasks, trypsinized and subcloned. The subclones were screened for the  
15 presence of B- and D-specific messenger RNA. Those cell lines that produce both messages were scaled up for the production of B/D dimers.

Stable Transfection of Mouse Lymphoid Cells  
For the Production of Homodimers of Human  
20 Subunits B or D, and a Mixture of Subunits B and D

The cell line Sp2/0 (American Type Culture Collection CRL 1581) was grown in Dulbecco's Modified Eagle Medium plus 4.5 g/l glucose (DMEM, Gibco) plus 10% fetal bovine serum. The medium was supplemented  
25 with glutamine/penicillin/streptomycin (Irvine Scientific, Irvine, California).

The electroporation method of Potter, et al., Proc. Natl. Acad. Sci. (USA), 81, 7161 (1984) was used. After transfection, cells were allowed to  
30 recover in complete DMEM for 24 to 48 hours, and then seeded either into 96-well culture plates at 10,000 to 50,000 cells per well or in T-flasks at  $5 \times 10^4$  cells/ml in the presence of selective medium. G418 (Gibco) selection was used at 0.8 to 1.2 mg/ml.  
35 Mycophenolic acid (MPA, Calbiochem) was used at 6

- 51 -

$\mu\text{g/ml}$  plus 0.25 mg/ml xanthine. The electroporation technique gave a transfection frequency of 1 to  $10 \times 10^{-5}$  for the Sp2/0 cells.

Cell lines producing subunit D were obtained as described below. The expression plasmid pING3906 (containing the neo selectable marker) was digested with NotI and transfected into the Sp2/0 cells. Approximately 75% of the cells were plated into 96-well plates. The remaining 25% were plated into T25 or T75 flasks. Clones of D-producing transfectants were screened directly for the presence of D-specific messenger RNA.

Those cell lines that were identified as producing the highest levels of mRNA were expanded and grown either in DMEM medium plus 10% fetal bovine serum or in protein-free medium (PFHM, Gibco) for the production of subunit D. By this strategy, cell lines which produce subunit B or homodimers of subunit B were similarly developed.

To obtain cell lines which produce mixtures consisting of subunits D and B, a D-producing cell line which had been transfected with a plasmid containing the neo selectable marker (pING3906) was subsequently transfected with a plasmid containing the gpt selective marker and the gene encoding the B subunit (pING3918). G418- and MPA-resistant transfectants were then screened for the production of B- and D-specific mRNA. Cell lines that express both mRNAs were grown in serum-free or protein-free medium.

30

- 52 -

EXAMPLE 13Detection of Subunits B and D  
Using Western Blot Assay

Protein samples were electrophoresed on 12.5  
5 or 15% SDS polyacrylamide gels (SDS-PAGE), and  
electrophoretically transferred to either  
polyvinylidene difluoride (PVDF) transfer membrane or  
nitrocellulose in the presence of 10% methanol, 10 mM  
10 cyclohexylamino-1-propanesulfonic acid (CAPS), pH  
10-11, at 0.5 amp for 15 to 30 minutes. The PVDF  
membrane or nitrocellulose filter was treated for  
Western Blot analysis utilizing antibodies generated  
as described in Example 8.

The PVDF membrane or nitrocellulose paper  
15 containing the protein was placed in a  
solution-designated buffer P (composed of 20 mM  
phosphate, pH 7.4; 0.15 M NaCl; 0.05% Tween-20; 0.25%  
gelatin; and 0.02% sodium azide) for a minimum of 1  
hour at 22°C with agitation.

20 Buffer P was then replaced by buffer Q  
(composed of buffer P plus antibodies) for a minimum  
of 1 hour at 22°C (or overnight at 4°C). Buffer Q was  
replaced by buffer P, which was changed four times  
over a minimum of 1 hour. Buffer P was replaced by  
25 buffer R (buffer P plus <sup>125</sup>I protein A at 2.5 x 10<sup>5</sup>  
cpm/ml, Amersham) and incubated for 1 hour at 22°C  
with agitation. Buffer R was replaced by buffer P,  
which was changed at least four times during 1 hour of  
incubation.

30 The moist PVDF membrane or nitrocellulose  
filter was placed between sheets of plastic wrap, and  
together with a lighting screen and X-ray film (Dupont  
Cronex, Wilmington, DE), enclosed in a light-proof  
folder, and placed at -70°C for an appropriate period

- 53 -

of time. The exposed film was developed using standard techniques and equipment.

#### EXAMPLE 14

5                   Detection of Subunit B and Subunit D Using  
                  Enzyme-Linked Immunosorbant Assay-ELISA

                  ELISA assays were performed in 96-well  
                  Immulon plates (Dynatech) into which samples at  
                  several dilutions and in a final volume of 200  $\mu$ l  
10                   containing 3M urea, 15 mM Na<sub>2</sub>CO<sub>3</sub>, 24 mM NaHCO<sub>3</sub>, pH 9.6  
                  were bound. Binding was performed first at 60°C for  
                  15 minutes and subsequently at 21°C to 24°C for 2  
                  hours or at 4°C for 12 to 18 hours in a humidified  
                  chamber. Following binding, the wells of the plate  
15                   were individually washed three times with a solution  
                  containing 8 mM Na<sub>2</sub>HPO<sub>4</sub>, 1.5 mM KH<sub>2</sub>PO<sub>4</sub>, 2.7 mM KCl, 137  
                  mM NaCl, and 0.05% Tween-20 in Millipore-filtered,  
                  distilled water (solution E), and then washed two  
                  times with Millipore-filtered, distilled water.

20                   Antibody against the N-terminal of subunit D  
                  (described in Example 8), or against reduced and  
                  carboxymethylated subunit B (described in Example 8)  
                  were added at a 1:1000 to 1:5000 dilution in solution  
                  E and incubated at 21°C to 24°C for 2 hours. Following  
25                   incubation with antibody, the plate was washed as  
                  described above and peroxidase-conjugated Goat  
                  anti-Rabbit antibody (Cappel) at 1:1000 dilution in  
                  solution E was added to the plate and incubated at  
                  21°C to 24°C for 2 hours. The plate was washed as  
30                   described above and developed using the TMB reagent  
                  (Pierce) according to the manufacturer's instructions.

                  Typical assays contained recombinant protein  
                  prepared as described in Example 15, a positive  
                  control containing aliquots from a single lot of a  
35                   Prep-HPLC pool of bovine bone (described in Example

- 54 -

1), and appropriate negative controls. For purposes of comparison between the various recombinant protein preparations, the B-immunoreactivity and the D-immunoreactivity contained in 50  $\mu$ g of the Prep HPLC pool of the bovine bone preparation was defined as 2 units of reactivity.

#### EXAMPLE 15

##### 10            Characterization of Human Osteogenically Active Proteins Expressed in Animal Cells

The osteogenically active proteins contained in the culture supernatant were enriched using column chromatography steps as described in Example 1. For example, the conditioned media was adjusted to 6 M urea, 50 mM MES, pH 6.5, conductivity 10 mS/cm (by addition of crystalline urea and 1 M MES, pH 6.5). The adjusted sample was applied onto a Q-Sepharose column equilibrated in 6 M urea, 50 mM MES, pH 6.5, conductivity 10 mS/cm. The unbound protein of the Q-Sepharose column was applied to a S-Sepharose column equilibrated in 6 M urea, 50 mM MES, pH 6.5, conductivity 10 mS/cm, and the S-Sepharose column was washed with the same buffer to remove unbound protein. The protein bound to the S-Sepharose column was eluted with 6 M urea, 50 mM MES, pH 6.5, 1 M NaCl. Further enrichment was achieved using hydrophobic interaction chromatography on a Phenyl-Sepharose column. The sample in 6 M urea, 50 mM MES, 1 M NaCl was made 50 mM in Tris HCl, pH 7.3-8.0, using 1 M Tris stock, and was 25% saturated in ammonium sulfate using 13.4 g ammonium sulfate for each 100 ml of sample. The sample was applied to a Phenyl-Sepharose column equilibrated in 6 M urea, 50 mM Tris HCl, pH 7.3-8.0, 25% saturated ammonium sulfate, and the column was washed with the same buffer to remove unbound protein.



- 55 -

The bound protein was eluted using 6 M urea, 50 mM Tris HCl, pH 7.3 to 8.0 or 6 M urea, 50 mM MES pH 6.5. The sample was desalted and further purified by reverse phase chromatography using C-18 HPLC columns (as shown in Example 1) equilibrated with a buffer containing, by volume, 70% Buffer A and 30% Buffer B, as described previously (Buffer A is 0.05% trifluoroacetic acid in water and Buffer B is 0.025% trifluoroacetic acid in acetonitrile). Bound proteins were eluted using a linear gradient of 30% to 60% acetonitrile. The immunoreactive dimers eluted within the concentrations of 35% to 45% acetonitrile, and were concentrated by lyophilization. Enriched samples isolated from the supernatant of cells transfected with both the gene sequence for human mature B and the gene sequence for human mature D (C1131) are called Prep B/D. Enriched samples isolated from the supernatant of cells transfected only with the gene sequence for human mature B are called Prep B. Enriched samples isolated from the supernatant of cells transfected only with the gene sequence for human mature D are called Prep D. Enriched samples containing admixtures of Prep B and Prep D are called Prep B+D.

Following lyophilization, the enriched samples were solubilized in Millipore-filtered, distilled water and were characterized for the presence of subunit B and/or subunit D using specific antisera (described in Example 8), Western blot techniques (described in Example 13), and ELISA assays (described in Example 14).

Western Blot analyses of the enriched samples isolated from media of CHO cells transfected with both the B-subunit sequence and the D-subunit sequence (Prep B/D), or separately transfected with only the

- 56 -

D-subunit sequence (Prep D), or with only the B-subunit sequence (Prep B) are shown in Figure 9. The Western blot analysis of the reduced samples performed with antibody specific for subunit B showed, in Prep B/D, a broad B-specific band of 16,000 to 17,000 daltons. Similar analysis of Prep B showed an identical B-specific band. Analysis of reduced samples using D-specific antibody showed a broad D-specific band at 17,000 to 19,000 daltons and a less prominent band at 22,000 to 23,000 daltons for samples of Prep B/D and Prep D. Analysis of non-reduced Prep B/D and non-reduced Prep D with D-specific antibody showed prominent D-containing dimers of 30,000 to 32,000 daltons and less prominent dimers extending to a molecular weight of approximately 37,000 daltons. Poor reactivity of the B-specific antibody with non-reduced Prep B and non-reduced Prep B/D hindered Western blot demonstration of the B-subunit in Prep B and in Prep B/D (data not shown).

Polyacrylamide gel electrophoresis of the proteins contained in individual HPLC fractions of Prep B/D, transfer of the proteins to PVDF membrane (described in Example 13), and Coomassie staining were used to isolate the non-reduced, 30,000 to 32,000 dalton band. The excised band was sequenced using the gas phase sequenator. The sequence obtained revealed the N-terminal sequence STGSKQR-QN of the D-subunit and the N-terminal sequence QAK-KQR--L of the B-subunit (the complete sequences of the D and B subunits are set out in SEQ ID NOS: 2 and 4, respectively).

The biological activity of the enriched samples of Prep B/D, Prep B+D, Prep D and Prep B were determined using the rat implant assay as described in Example 2. ELISA assays were used to quantitate the

- 57 -

amount of B-subunit or D-subunit immunoreactivity present in each of the enriched preparations. Comparison was made to the amount of B-immunoreactivity and/or the amount of

5 D-immunoreactivity contained in 50  $\mu$ g of the Prep-HPLC pool of the bovine bone preparation which is defined as 2 units of immunoreactivity. Two units of the Prep HPLC pool of the bovine bone preparation contain 1 unit of B-immunoreactivity and 1 unit of

10 D-immunoreactivity, and, upon implantation for 21 days yielded 14% of the area of the stained sections occupied by osteoid activity. Enriched samples of Prep B/D, Prep B+D, Prep B and Prep D containing various amounts of immunoreactivity were implanted for

15 17 days and analyzed for percent bone formation in the explant tissue (FIG. 10). The most potent bone formation activity from media of cells was obtained with Prep B/D such as from cell line C1131. For example, implantation of Prep B/D containing 1.5 units

20 B-immunoreactivity and 0.8 units of D-immunoreactivity, resulted in 55% of the area of the stained sections occupied by osteoid activity. In contrast, implantation of Prep B containing 1.5 units of B-immunoreactivity resulted in less than 10% of the

25 area of the stained sections occupied by osteoid activity, implantation of Prep D containing 1.1 units of D-immunoreactivity resulted in only 1% of the area of the stained sections occupied by osteoid activity and implantation of an admixture of Prep B (1.5 units

30 and Prep D (0.8 units) containing a total of 2.3 units resulted in only 1% of the area of the stained sections occupied by osteoid activity.

Numerous modifications and variations in the practice of the invention are expected to occur to

35 those skilled in the art upon consideration of the

- 58 -

foregoing descriptions of preferred embodiments thereof. Consequently, only such limitations should be placed upon the invention as appear in the following claims.

- 59 -

## SEQUENCE LISTING

## (1) GENERAL INFORMATION:

- (i) APPLICANT: Grinna, Lynn  
Parsons, Thomas F.  
Theofan, Georgia
- (ii) TITLE OF INVENTION: Osteogenic Factor
- (iii) NUMBER OF SEQUENCES: 63
- (iv) CORRESPONDENCE ADDRESS:
  - (A) ADDRESSEE: Marshall, O'Toole, Gerstein, Murray & Bicknell
  - (B) STREET: Two First National Plaza, 20 South Clark Street
  - (C) CITY: Chicago
  - (D) STATE: Illinois
  - (E) COUNTRY: USA
  - (F) ZIP: 60603
- (v) COMPUTER READABLE FORM:
  - (A) MEDIUM TYPE: Floppy disk
  - (B) COMPUTER: IBM PC compatible
  - (C) OPERATING SYSTEM: PC-DOS/MS-DOS
  - (D) SOFTWARE: PatentIn Release #1.0, Version #1.25
- (vi) CURRENT APPLICATION DATA:
  - (A) APPLICATION NUMBER:
  - (B) FILING DATE:
  - (C) CLASSIFICATION:
- (vii) PRIOR APPLICATION DATA:
  - (A) APPLICATION NUMBER: US 07/415,555
  - (B) FILING DATE: 04-OCT-1989
- (vii) PRIOR APPLICATION DATA:
  - (A) APPLICATION NUMBER: US 07/256,034
  - (B) FILING DATE: 11-OCT-1988
- (viii) ATTORNEY/AGENT INFORMATION:
  - (A) NAME: Sharp, Jeffrey S.
  - (B) REGISTRATION NUMBER: 31,879
  - (C) REFERENCE/DOCKET NUMBER: 27129/9430
- (ix) TELECOMMUNICATION INFORMATION:
  - (A) TELEPHONE: (312) 346-5750
  - (B) TELEFAX: (312) 984-9740
  - (C) TELEX: 25-3856



- 61 -

## (2) INFORMATION FOR SEQ ID NO:2:

## (i) SEQUENCE CHARACTERISTICS:

- (A) LENGTH: 139 amino acids
- (B) TYPE: amino acid
- (D) TOPOLOGY: linear

## (ii) MOLECULE TYPE: protein

## (xi) SEQUENCE DESCRIPTION: SEQ ID NO:2:

Ser	Thr	Gly	Ser	Lys	Gln	Arg	Ser	Gln	Asn	Arg	Ser	Lys	Thr	Pro	Lys			
1				5					10					15				
Asn	Gln	Glu	Ala	Leu	Arg	Met	Ala	Asn	Val	Ala	Glu	Asn	Ser	Ser	Ser			
			20					25					30					
Asp	Gln	Arg	Gln	Ala	Cys	Lys	Lys	His	Glu	Leu	Tyr	Val	Ser	Phe	Arg			
		35					40					45						
Asp	Leu	Gly	Trp	Gln	Asp	Trp	Ile	Ile	Ala	Pro	Glu	Gly	Tyr	Ala	Ala			
	50					55					60							
Tyr	Tyr	Cys	Glu	Gly	Glu	Cys	Ala	Phe	Pro	Leu	Asn	Ser	Tyr	Met	Asn			
65					70					75					80			
Ala	Thr	Asn	His	Ala	Ile	Val	Gln	Thr	Leu	Val	His	Phe	Ile	Asn	Pro			
				85					90					95				
Glu	Thr	Val	Pro	Lys	Pro	Cys	Cys	Ala	Pro	Thr	Gln	Leu	Asn	Ala	Ile			
			100					105					110					
Ser	Val	Leu	Tyr	Phe	Asp	Asp	Ser	Ser	Asn	Val	Ile	Leu	Lys	Lys	Tyr			
		115					120					125						
Arg	Asn	Met	Val	Val	Arg	Ala	Cys	Gly	Cys	His								
		130				135												

## (2) INFORMATION FOR SEQ ID NO:3:

## (i) SEQUENCE CHARACTERISTICS:

- (A) LENGTH: 342 base pairs
- (B) TYPE: nucleic acid
- (C) STRANDEDNESS: single
- (D) TOPOLOGY: linear

## (ii) MOLECULE TYPE: cDNA

## (ix) FEATURE:

- (A) NAME/KEY: CDS
- (B) LOCATION: 1..342

(xi) SEQUENCE DESCRIPTION: SEQ ID NO:3:

CAA	GCC	AAA	CAC	AAA	CAG	CGG	AAA	CGC	CTT	AAG	TCC	AGC	TGT	AAG	AGA	48
Gln	Ala	Lys	His	Lys	Gln	Arg	Lys	Arg	Leu	Lys	Ser	Ser	Cys	Lys	Arg	
1				5					10					15		
CAC	CCT	TTG	TAC	GTG	GAC	TTC	AGT	GAC	GTG	GGG	TGG	AAT	GAC	TGG	ATT	96
His	Pro	Leu	Tyr	Val	Asp	Phe	Ser	Asp	Val	Gly	Trp	Asn	Asp	Trp	Ile	
			20					25					30			
GTG	GCT	CCC	CCG	GGG	TAT	CAC	GCC	TTT	TAC	TGC	CAC	GGA	GAA	TGC	CCT	144
Val	Ala	Pro	Pro	Gly	Tyr	His	Ala	Phe	Tyr	Cys	His	Gly	Glu	Cys	Pro	
		35					40					45				
TTT	CCT	CTG	JCT	GAT	CAT	CTG	AAC	TCC	ACT	AAT	CAT	GCC	ATT	GTT	CAG	192
Phe	Pro	Leu	Ala	Asp	His	Leu	Asn	Ser	Thr	Asn	His	Ala	Ile	Val	Gln	
		50				55					60					
ACG	TTG	GTC	AAC	TCT	GTT	AAC	TCT	AAG	ATT	CCT	AAG	GCA	TGC	TGT	GTC	240
Thr	Leu	Val	Asn	Ser	Val	Asn	Ser	Lys	Ile	Pro	Lys	Ala	Cys	Cys	Val	
65					70					75					80	
CCG	ACA	GAA	CTC	AGT	GCT	ATC	TCG	ATG	CTG	TAC	CTT	GAC	GAG	AAT	GAA	288
Pro	Thr	Glu	Leu	Ser	Ala	Ile	Ser	Met	Leu	Tyr	Leu	Asp	Glu	Asn	Glu	
				85					90					95		
AAG	GTT	GTA	TTA	AAG	AAC	TAT	CAG	GAC	ATG	GTT	GTG	GAG	GGT	TGT	GGG	336
Lys	Val	Val	Leu	Lys	Asn	Tyr	Gln	Asp	Met	Val	Val	Glu	Gly	Cys	Gly	
			100					105					110			
TGT	CGC															342
Cys	Arg															

(2) INFORMATION FOR SEQ ID NO:4:

- (i) SEQUENCE CHARACTERISTICS:
  - (A) LENGTH: 114 amino acids
  - (B) TYPE: amino acid
  - (D) TOPOLOGY: linear

(ii) MOLECULE TYPE: protein

(xi) SEQUENCE DESCRIPTION: SEQ ID NO:4:

Gln	Ala	Lys	His	Lys	Gln	Arg	Lys	Arg	Leu	Lys	Ser	Ser	Cys	Lys	Arg	
1				5					10					15		
His	Pro	Leu	Tyr	Val	Asp	Phe	Ser	Asp	Val	Gly	Trp	Asn	Asp	Trp	Ile	
			20					25					30			
Val	Ala	Pro	Pro	Gly	Tyr	His	Ala	Phe	Tyr	Cys	His	Gly	Glu	Cys	Pro	



35 40 45

Phe Pro Leu Ala Asp His Leu Asn Ser Thr Asn His Ala Ile Val Gln  
 50 55 60

Thr Leu Val Asn Ser Val Asn Ser Lys Ile Pro Lys Ala Cys Cys Val  
 65 70 75 80

Pro Thr Glu Leu Ser Ala Ile Ser Met Leu Tyr Leu Asp Glu Asn Glu  
 85 90 95

Lys Val Val Leu Lys Asn Tyr Gln Asp Met Val Val Glu Gly Cys Gly  
 100 105 110

Cys Arg

(2) INFORMATION FOR SEQ ID NO:5:

- (i) SEQUENCE CHARACTERISTICS:
  - (A) LENGTH: 1224 base pairs
  - (B) TYPE: nucleic acid
  - (C) STRANDEDNESS: single
  - (D) TOPOLOGY: linear

(ii) MOLECULE TYPE: cDNA

- (ix) FEATURE:
  - (A) NAME/KEY: CDS
  - (B) LOCATION: 1..1224

(xi) SEQUENCE DESCRIPTION: SEQ ID NO:5:

ATG ATT CCT GGT AAC CGA ATG CTG ATG GTC GTT TTA TTA TGC CAA GTC	48
Met Ile Pro Gly Asn Arg Met Leu Met Val Leu Leu Cys Gln Val	
1 5 10 15	
CTG CTA GGA GGC GCG AGC CAT GCT AGT TTG ATA CCT GAG ACG GGG AAG	96
Leu Leu Gly Gly Ala Ser His Ala Ser Leu Ile Pro Glu Thr Gly Lys	
20 25 30	
AAA AAA GTC GCC GAG ATT CAG GGC CAC GCG GGA GGA CGC CGC TCA GGG	144
Lys Lys Val Ala Glu Ile Gln Gly His Ala Gly Gly Arg Arg Ser Gly	
35 40 45	
CAG AGC CAT GAG CTC CTG CCG GAC TTC GAG GCG ACA CTT CTG CAG ATG	192
Gln Ser His Glu Leu Leu Arg Asp Phe Glu Ala Thr Leu Leu Gln Met	
50 55 60	
TTT GGG CTG CGC CGC CGC CCG CAG CCT AGC AAG AGT GCC GTC ATT CCG	240
Phe Gly Leu Arg Arg Arg Pro Gln Pro Ser Lys Ser Ala Val Ile Pro	
65 70 75 80	

GAC TAC ATG CGG GAT CTT TAC CGG CTT CAG TCT GGG GAG GAG GAG GAA Asp Tyr Met Arg Asp Leu Tyr Arg Leu Gln Ser Gly Glu Glu Glu Glu 85 90 95	288
GAG CAG ATC CAC AGC ACT GGT CTT GAG TAT CCT GAG CGC CCG GCC AGC Glu Gln Ile His Ser Thr Gly Leu Glu Tyr Pro Glu Arg Pro Ala Ser 150 105 110	336
CGG GCC AAC ACC GTG AGG AGC TTC CAC CAC GAA GAA CAT CTG GAG AAC Arg Ala Asn Thr Val Arg Ser Phe His His Glu Glu His Leu Glu Asn 115 120 125	384
ATC CCA GGG ACC AGT GAA AAC TCT GCT TTT CGT TTC CTC TTT AAC CTC Ile Pro Gly Thr Ser Glu Asn Ser Ala Phe Arg Phe Leu Phe Asn Leu 130 135 140	432
AGC AGC ATC CCT GAG AAC GAG GCG ATC TCC TCT GCA GAG CTT CGG CTC Ser Ser Ile Pro Glu Asn Glu Ala Ile Ser Ser Ala Glu Leu Arg Leu 145 150 155 160	480
TTC CGG GAG CAG GTG GAC CAG GGC CCT GAT TGG GAA AGG GGC TTC CAC Phe Arg Glu Gln Val Asp Gln Gly Pro Asp Trp Glu Arg Gly Phe His 165 170 175	528
CGT ATA AAC ATT TAT GAG GTT ATG AAG CCC CCA GCA GAA GTG GTG CCT Arg Ile Asn Ile Tyr Glu Val Met Lys Pro Pro Ala Glu Val Val Pro 180 185 190	576
GGG CAC CTC ATC ACA CGA CTA CTG GAC ACG AGA CTG GTC CAC CAC AAT Gly His Leu Ile Thr Arg Leu Leu Asp Thr Arg Leu Val His His Asn 195 200 205	624
GTG ACA CGG TGG GAA ACT TTT GAT GTG AGC CCT GCG GTC CTT CGC TGG Val Thr Arg Trp Glu Thr Phe Asp Val Ser Pro Ala Val Leu Arg Trp 210 215 220	672
ACC CGG GAG AAG CAG CCA AAC TAT GGG CTA GCC ATT GAG GTG ACT CAC Thr Arg Glu Lys Gln Pro Asn Tyr Gly Leu Ala Ile Glu Val Thr His 225 230 235 240	720
CTC CAT CAG ACT CGG ACC CAC CAG GGC CAG CAT GTC AGG ATT AGC CGA Leu His Gln Thr Arg Thr His Gln Gly Gln His Val Arg Ile Ser Arg 245 250 255	768
TCG TTA CCT CAA GGG AGT GGG AAT TGG GCC CAG CTC CGG CCC CTC CTG Ser Leu Pro Gln Gly Ser Gly Asn Trp Ala Gln Leu Arg Pro Leu Leu 260 265 270	816
GTC ACC TTT GGC CAT GAT GGC CGG GGC CAT GCC TTG ACC CGA CGC CGG Val Thr Phe Gly His Asp Gly Arg Gly His Ala Leu Thr Arg Arg Arg 275 280 285	864
AGG GCC AAG CGT AGC CCT AAG CAT CAC TCA CAG CGG GCC AGG AAG AAG	912

- 65 -

Arg	Ala	Lys	Arg	Ser	Pro	Lys	His	His	Ser	Gln	Arg	Ala	Arg	Lys	Lys	
290						295					300					
AAT	AAG	AAC	TGC	CGG	CGC	CAC	TCG	CTC	TAT	GTG	GAC	TTC	AGC	GAT	GTG	960
Asn	Lys	Asn	Cys	Arg	Arg	His	Ser	Leu	Tyr	Val	Asp	Phe	Ser	Asp	Val	
305					310					315					320	
GGC	TGG	AAT	GAC	TGG	ATT	GTG	GCC	CCA	CCA	GGC	TAC	CAG	GCC	TTC	TAC	1008
Gly	Trp	Asn	Asp	Trp	Ile	Val	Ala	Pro	Pro	Gly	Tyr	Gln	Ala	Phe	Tyr	
				325						330					335	
TGC	CAT	GGG	GAC	TGC	CCC	TTT	CCA	CTG	GCT	GAC	CAC	CTC	AAC	TCA	ACC	1056
Cys	His	Gly	Asp	Cys	Pro	Phe	Pro	Leu	Ala	Asp	His	Leu	Asn	Ser	Thr	
			340					345						350		
AAC	CAT	GCC	ATT	GTG	CAG	ACC	CTG	GTC	AAT	TCT	GTC	AAT	TCC	AGT	ATC	1104
Asn	His	Ala	Ile	Val	Gln	Thr	Leu	Val	Asn	Ser	Val	Asn	Ser	Ser	Ile	
		355					360						365			
CCC	AAA	GCC	TGT	TGT	GTG	CCC	ACT	GAA	CTG	AGT	GCC	ATC	TCC	ATG	CTG	1152
Pro	Lys	Ala	Cys	Cys	Val	Pro	Thr	Glu	Leu	Ser	Ala	Ile	Ser	Met	Leu	
		370				375					380					
TAC	CTG	GAT	GAG	TAT	GAT	AAG	GTG	GTA	CTG	AAA	AAT	TAT	CAG	GAG	ATG	1200
Tyr	Leu	Asp	Glu	Tyr	Asp	Lys	Val	Val	Leu	Lys	Asn	Tyr	Gln	Glu	Met	
385					390					395					400	
GTA	GTA	GAG	GGA	TGT	GGG	TGC	CGC									1224
Val	Val	Glu	Gly	Cys	Gly	Cys	Arg									
				405												

(2) INFORMATION FOR SEQ ID NO:6:

(i) SEQUENCE CHARACTERISTICS:

- (A) LENGTH: 408 amino acids
- (B) TYPE: amino acid
- (D) TOPOLOGY: linear

(ii) MOLECULE TYPE: protein

(xi) SEQUENCE DESCRIPTION: SEQ ID NO:6:

Met	Ile	Pro	Gly	Asn	Arg	Met	Leu	Met	Val	Val	Leu	Leu	Cys	Gln	Val
1				5					10					15	
Leu	Leu	Gly	Gly	Ala	Ser	His	Ala	Ser	Leu	Ile	Pro	Glu	Thr	Gly	Lys
			20					25						30	
Lys	Lys	Val	Ala	Glu	Ile	Gln	Gly	His	Ala	Gly	Gly	Arg	Arg	Ser	Gly
		35					40					45			
Gln	Ser	His	Glu	Leu	Leu	Arg	Asp	Phe	Glu	Ala	Thr	Leu	Leu	Gln	Met
		50				55						60			

- 66 -

Phe Gly Leu Arg Arg Arg Pro Gln Pro Ser Lys Ser Ala Val Ile Pro  
 65 70 75 80  
 Asp Tyr Met Arg Asp Leu Tyr Arg Leu Gln Ser Gly Glu Glu Glu Glu  
 85 90 95  
 Glu Gln Ile His Ser Thr Gly Leu Glu Tyr Pro Glu Arg Pro Ala Ser  
 100 105 110  
 Arg Ala Asn Thr Val Arg Ser Phe His His Glu Glu His Leu Glu Asn  
 115 120 125  
 Ile Pro Gly Thr Ser Glu Asn Ser Ala Phe Arg Phe Leu Phe Asn Leu  
 130 135 140  
 Ser Ser Ile Pro Glu Asn Glu Ala Ile Ser Ser Ala Glu Leu Arg Leu  
 145 150 155 160  
 Phe Arg Glu Gln Val Asp Gln Gly Pro Asp Trp Glu Arg Gly Phe His  
 165 170 175  
 Arg Ile Asn Ile Tyr Glu Val Met Lys Pro Pro Ala Glu Val Val Pro  
 180 185 190  
 Gly His Leu Ile Thr Arg Leu Leu Asp Thr Arg Leu Val His His Asn  
 195 200 205  
 Val Thr Arg Trp Glu Thr Phe Asp Val Ser Pro Ala Val Leu Arg Trp  
 210 215 220  
 Thr Arg Glu Lys Gln Pro Asn Tyr Gly Leu Ala Ile Glu Val Thr His  
 225 230 235 240  
 Leu His Gln Thr Arg Thr His Gln Gly Gln His Val Arg Ile Ser Arg  
 245 250 255  
 Ser Leu Pro Gln Gly Ser Gly Asn Trp Ala Gln Leu Arg Pro Leu Leu  
 260 265 270  
 Val Thr Phe Gly His Asp Gly Arg Gly His Ala Leu Thr Arg Arg Arg  
 275 280 285  
 Arg Ala Lys Arg Ser Pro Lys His His Ser Gln Arg Ala Arg Lys Lys  
 290 295 300  
 Asn Lys Asn Cys Arg Arg His Ser Leu Tyr Val Asp Phe Ser Asp Val  
 305 310 315 320  
 Gly Trp Asn Asp Trp Ile Val Ala Pro Pro Gly Tyr Gln Ala Phe Tyr  
 325 330 335  
 Cys His Gly Asp Cys Pro Phe Pro Leu Ala Asp His Leu Asn Ser Thr  
 340 345 350

- 67 -

Asn His Ala Ile Val Gln Thr Leu Val Asn Ser Val Asn Ser Ser Ile  
 355 360 365

Pro Lys Ala Cys Cys Val Pro Thr Glu Leu Ser Ala Ile Ser Met Leu  
 370 375 380

Tyr Leu Asp Glu Tyr Asp Lys Val Val Leu Lys Asn Tyr Gln Glu Met  
 385 390 395 400

Val Val Glu Gly Cys Gly Cys Arg  
 405

## (2) INFORMATION FOR SEQ ID NO:7:

- (i) SEQUENCE CHARACTERISTICS:  
 (A) LENGTH: 20 amino acids  
 (B) TYPE: amino acid  
 (D) TOPOLOGY: linear

(ii) MOLECULE TYPE: protein

## (xi) SEQUENCE DESCRIPTION: SEQ ID NO:7:

Ser Ala Pro Gly Arg Arg Arg Gln Gln Ala Arg Asn Arg Ser Thr Pro  
 1 5 10 15  
 Ala Gln Asp Val  
 20

## (2) INFORMATION FOR SEQ ID NO:8:

- (i) SEQUENCE CHARACTERISTICS:  
 (A) LENGTH: 15 amino acids  
 (B) TYPE: amino acid  
 (D) TOPOLOGY: linear

(ii) MOLECULE TYPE: protein

## (xi) SEQUENCE DESCRIPTION: SEQ ID NO:8:

Ser Xaa Lys His Xaa Xaa Gln Arg Xaa Arg Lys Lys Asn Asn Asn  
 1 5 10 15

## (2) INFORMATION FOR SEQ ID NO:9:

- (i) SEQUENCE CHARACTERISTICS:  
 (A) LENGTH: 20 amino acids  
 (B) TYPE: amino acid  
 (D) TOPOLOGY: linear

- 68 -

(ii) MOLECULE TYPE: protein

(xi) SEQUENCE DESCRIPTION: SEQ ID NO:9:

Ser	Thr	Gly	Gly	Lys	Gln	Arg	Ser	Gln	Asn	Arg	Ser	Lys	Thr	Pro	Lys
1				5				10						15	

Asn	Gln	Glu	Ala
			20

(2) INFORMATION FOR SEQ ID NO:10:

(i) SEQUENCE CHARACTERISTICS:  
 (A) LENGTH: 11 amino acids  
 (B) TYPE: amino acid  
 (D) TOPOLOGY: linear

(ii) MOLECULE TYPE: protein

(xi) SEQUENCE DESCRIPTION: SEQ ID NO:10:

Xaa	Val	Val	Leu	Lys	Asn	Tyr	Gln	Asp	Met	Val
1				5					10	

(2) INFORMATION FOR SEQ ID NO:11:

(i) SEQUENCE CHARACTERISTICS:  
 (A) LENGTH: 12 amino acids  
 (B) TYPE: amino acid  
 (D) TOPOLOGY: linear

(ii) MOLECULE TYPE: protein

(xi) SEQUENCE DESCRIPTION: SEQ ID NO:11:

Xaa	Xaa	Lys	Val	Val	Leu	Lys	Asn	Tyr	Gln	Asp	Met
1				5					10		

(2) INFORMATION FOR SEQ ID NO:12:

(i) SEQUENCE CHARACTERISTICS:  
 (A) LENGTH: 20 amino acids  
 (B) TYPE: amino acid  
 (D) TOPOLOGY: linear

(ii) MOLECULE TYPE: protein

- 69 -

## (xi) SEQUENCE DESCRIPTION: SEQ ID NO:12:

Ser Ala Pro Gly Arg Arg Arg Gln Gln Ala Arg Asn Arg Ser Thr Pro  
1 5 10 15  
Ala Gln Asp Val  
20

## (2) INFORMATION FOR SEQ ID NO:13:

## (i) SEQUENCE CHARACTERISTICS:

- (A) LENGTH: 20 amino acids
- (B) TYPE: amino acid
- (D) TOPOLOGY: linear

## (ii) MOLECULE TYPE: protein

## (xi) SEQUENCE DESCRIPTION: SEQ ID NO:13:

Asn Pro Glu Tyr Val Pro Lys Xaa Xaa Xaa Ala Pro Thr Lys Leu Asn  
1 5 10 15  
Ala Ile Ser Val  
20

## (2) INFORMATION FOR SEQ ID NO:14:

## (i) SEQUENCE CHARACTERISTICS:

- (A) LENGTH: 15 amino acids
- (B) TYPE: amino acid
- (D) TOPOLOGY: linear

## (ii) MOLECULE TYPE: protein

## (xi) SEQUENCE DESCRIPTION: SEQ ID NO:14:

Xaa Ala Thr Asn Xaa Ala Ile Val Gln Xaa Leu Val Xaa Leu Met  
1 5 10 15

## (2) INFORMATION FOR SEQ ID NO:15:

## (i) SEQUENCE CHARACTERISTICS:

- (A) LENGTH: 6 amino acids
- (B) TYPE: amino acid
- (D) TOPOLOGY: linear

## (ii) MOLECULE TYPE: protein

- 70 -

(xi) SEQUENCE DESCRIPTION: SEQ ID NO:15:

Xaa Val Xaa Ala Xaa Gly  
 1 5

(2) INFORMATION FOR SEQ ID NO:16:

(i) SEQUENCE CHARACTERISTICS:  
 (A) LENGTH: 8 amino acids  
 (B) TYPE: amino acid  
 (D) TOPOLOGY: linear

(ii) MOLECULE TYPE: protein

(xi) SEQUENCE DESCRIPTION: SEQ ID NO:16:

Leu Tyr Leu Asp Glu Asn Glu Lys  
 1 5

(2) INFORMATION FOR SEQ ID NO:17:

(i) SEQUENCE CHARACTERISTICS:  
 (A) LENGTH: 8 amino acids  
 (B) TYPE: amino acid  
 (D) TOPOLOGY: linear

(ii) MOLECULE TYPE: protein

(xi) SEQUENCE DESCRIPTION: SEQ ID NO:17:

Val Val Glu Gly Xaa Gly Xaa Arg  
 1 5

(2) INFORMATION FOR SEQ ID NO:18:

(i) SEQUENCE CHARACTERISTICS:  
 (A) LENGTH: 25 amino acids  
 (B) TYPE: amino acid  
 (D) TOPOLOGY: linear

(ii) MOLECULE TYPE: protein

(xi) SEQUENCE DESCRIPTION: SEQ ID NO:18:

Leu Tyr Leu Asp Glu Asn Glu Lys Val Val Leu Lys Asn Tyr Gln Asp  
 1 5 10 15



- 71 -

Met Val Val Glu Gly Xaa Gly Xaa Arg  
                   20                  25

## (2) INFORMATION FOR SEQ ID NO:19:

- (i) SEQUENCE CHARACTERISTICS:  
 (A) LENGTH: 20 amino acids  
 (B) TYPE: amino acid  
 (D) TOPOLOGY: linear

(ii) MOLECULE TYPE: protein

## (xi) SEQUENCE DESCRIPTION: SEQ ID NO:19:

Ser Thr Gly Gly Lys Gln Arg Ser Gln Asn Arg Ser Lys Thr Pro Lys  
 1                  5                  10                  15

Asn Gln Glu Ala  
                   20

## (2) INFORMATION FOR SEQ ID NO:20:

- (i) SEQUENCE CHARACTERISTICS:  
 (A) LENGTH: 20 amino acids  
 (B) TYPE: amino acid  
 (D) TOPOLOGY: linear

(ii) MOLECULE TYPE: protein

## (xi) SEQUENCE DESCRIPTION: SEQ ID NO:20:

Xaa Ala Thr Asn His Ala Ile Val Gln Thr Leu Val His Phe Ile Asn  
 1                  5                  10                  15

Xaa Glu Thr Val  
                   20

## (2) INFORMATION FOR SEQ ID NO:21:

- (i) SEQUENCE CHARACTERISTICS:  
 (A) LENGTH: 15 amino acids  
 (B) TYPE: amino acid  
 (D) TOPOLOGY: linear

(ii) MOLECULE TYPE: protein

## (xi) SEQUENCE DESCRIPTION: SEQ ID NO:21:

Leu Tyr Leu Xaa Glu Tyr Asp Xaa Val Val Leu Xaa Asn Tyr Gln  
 1                                    5                                    10                                    15

(2) INFORMATION FOR SEQ ID NO:22:

- (i) SEQUENCE CHARACTERISTICS:
  - (A) LENGTH: 10 amino acids
  - (B) TYPE: amino acid
  - (D) TOPOLOGY: linear

(ii) MOLECULE TYPE: protein

(xi) SEQUENCE DESCRIPTION: SEQ ID NO:22:

Ser Ala Xaa Xaa His Xaa Ile Val Gln Thr  
 1                                    5                                    10

(2) INFORMATION FOR SEQ ID NO:23:

- (i) SEQUENCE CHARACTERISTICS:
  - (A) LENGTH: 11 amino acids
  - (B) TYPE: amino acid
  - (D) TOPOLOGY: linear

(ii) MOLECULE TYPE: protein

(xi) SEQUENCE DESCRIPTION: SEQ ID NO:23:

Xaa Ala Thr Asn Xaa Ala Ile Val Gln Thr Leu  
 1                                    5                                    10

(2) INFORMATION FOR SEQ ID NO:24:

- (i) SEQUENCE CHARACTERISTICS:
  - (A) LENGTH: 11 amino acids
  - (B) TYPE: amino acid
  - (D) TOPOLOGY: linear

(ii) MOLECULE TYPE: protein

(xi) SEQUENCE DESCRIPTION: SEQ ID NO:24:

Leu Tyr Leu Asp Glu Xaa Glu Xaa Val Val Leu  
 1                                    5                                    10

(2) INFORMATION FOR SEQ ID NO:25:

- 73 -

- (i) SEQUENCE CHARACTERISTICS:  
(A) LENGTH: 8 amino acids  
(B) TYPE: amino acid  
(D) TOPOLOGY: linear

(ii) MOLECULE TYPE: protein

(xi) SEQUENCE DESCRIPTION: SEQ ID NO:25:

Xaa Xaa Xaa Gly Arg Xaa Arg Gln  
1 5

(2) INFORMATION FOR SEQ ID NO:26:

- (A) LENGTH: 7 amino acids  
(B) TYPE: amino acid  
(D) TOPOLOGY: linear

(ii) MOLECULE TYPE: protein

(xi) SEQUENCE DESCRIPTION: SEQ ID NO:26:

Xaa Xaa Gly Gly Xaa Gln Arg  
1 5

(2) INFORMATION FOR SEQ ID NO:27:

- (i) SEQUENCE CHARACTERISTICS:  
(A) LENGTH: 13 amino acids  
(B) TYPE: amino acid  
(D) TOPOLOGY: linear

(ii) MOLECULE TYPE: protein

(xi) SEQUENCE DESCRIPTION: SEQ ID NO:27:

Leu Tyr Leu Asp Xaa Asn Xaa Xaa Val Val Leu Xaa Asn  
1 5 10

(2) INFORMATION FOR SEQ ID NO:28:

- (i) SEQUENCE CHARACTERISTICS:  
(A) LENGTH: 7 amino acids  
(B) TYPE: amino acid  
(D) TOPOLOGY: linear

(ii) MOLECULE TYPE: protein

- 74 -

## (xi) SEQUENCE DESCRIPTION: SEQ ID NO:28:

Xaa Pro Glu Xaa Val Pro Xaa  
 1                                   5

## (2) INFORMATION FOR SEQ ID NO:29:

- (i) SEQUENCE CHARACTERISTICS:  
 (A) LENGTH: 20 amino acids  
 (B) TYPE: amino acid  
 (D) TOPOLOGY: linear

(ii) MOLECULE TYPE: protein

## (xi) SEQUENCE DESCRIPTION: SEQ ID NO:29:

Ser Ala Pro Gly Arg Arg Arg Gln Gln Ala Arg Asn Arg Ser Thr Pro  
 1                                   5                                   10                                   15

Ala Gln Asp Val  
 20

## (2) INFORMATION FOR SEQ ID NO:30:

- (i) SEQUENCE CHARACTERISTICS:  
 (A) LENGTH: 20 amino acids  
 (B) TYPE: amino acid  
 (D) TOPOLOGY: linear

(ii) MOLECULE TYPE: protein

## (xi) SEQUENCE DESCRIPTION: SEQ ID NO:30:

Ser Thr Gly Gly Lys Arg Arg Ser Gln Asn Arg Ser Lys Thr Pro Lys  
 1                                   5                                   10                                   15

Asn Gln Glu Ala  
 20

## (2) INFORMATION FOR SEQ ID NO:31:

- (i) SEQUENCE CHARACTERISTICS:  
 (A) LENGTH: 11 amino acids  
 (B) TYPE: amino acid  
 (D) TOPOLOGY: linear

(ii) MOLECULE TYPE: protein

- 75 -

(xi) SEQUENCE DESCRIPTION: SEQ ID NO:31:

Ser Thr Gly Gly Lys Gln Arg Ser Gln Asn Arg  
 1                    5                    10

(2) INFORMATION FOR SEQ ID NO:32:

- (i) SEQUENCE CHARACTERISTICS:  
 (A) LENGTH: 32 base pairs  
 (B) TYPE: nucleic acid  
 (C) STRANDEDNESS: single  
 (D) TOPOLOGY: linear

(ii) MOLECULE TYPE: cDNA

(xi) SEQUENCE DESCRIPTION: SEQ ID NO:32:

WSNACNGGNG GNAARCARMG NWSNCARAAY MG

32

(2) INFORMATION FOR SEQ ID NO:33:

- (i) SEQUENCE CHARACTERISTICS:  
 (A) LENGTH: 13 amino acids  
 (B) TYPE: amino acid  
 (D) TOPOLOGY: linear

(ii) MOLECULE TYPE: protein

(xi) SEQUENCE DESCRIPTION: SEQ ID NO:33:

Asn His Ala Ile Val Gln Thr Leu Val His Phe Ile Asn  
 1                    5                    10

(2) INFORMATION FOR SEQ ID NO:34:

- (i) SEQUENCE CHARACTERISTICS:  
 (A) LENGTH: 53 base pairs  
 (B) TYPE: nucleic acid  
 (C) STRANDEDNESS: single  
 (D) TOPOLOGY: linear

(ii) MOLECULE TYPE: cDNA

(ix) FEATURE:

- (A) NAME/KEY: misc difference  
 (B) LOCATION: replace (18, 27, 30, 33, 39, 42, 45)  
 (D) OTHER INFORMATION: note= "All 'N's in this sequence  
 designate the nucleotide analog deoxyinosinetriphosphate

- 76 -

(dITP) which was used in the positions where all four of the nucleotides (A, C, T or G) were possible."

(xi) SEQUENCE DESCRIPTION: SEQ ID NO:34:

TTTTTTTTGG ATCCRTTNAT RAARTGNACN ARNGTYTGNA CNATNGCRTG RTT

53

(2) INFORMATION FOR SEQ ID NO:35:

(i) SEQUENCE CHARACTERISTICS:  
 (A) LENGTH: 10 amino acids  
 (B) TYPE: amino acid  
 (D) TOPOLOGY: linear

(ii) MOLECULE TYPE: protein

(xi) SEQUENCE DESCRIPTION: SEQ ID NO:35:

Lys Thr Pro Lys Asn Gln Glu Ala Leu Arg  
 1                    5                    10

(2) INFORMATION FOR SEQ ID NO:36:

(i) SEQUENCE CHARACTERISTICS:  
 (A) LENGTH: 29 base pairs  
 (B) TYPE: nucleic acid  
 (C) STRANDEDNESS: single  
 (D) TOPOLOGY: linear

(ii) MOLECULE TYPE: cDNA

(ix) FEATURE:

(A) NAME/KEY: misc difference  
 (B) LOCATION: replace (3, 6, 9, 18, 24, 27)  
 (D) OTHER INFORMATION: note= "All 'N's in this sequence designate the nucleotide analog deoxyinosinetriphosphate (dITP) which was used in the positions where all four of the nucleotides (A, C, T or G) were possible."

(xi) SEQUENCE DESCRIPTION: SEQ ID NO:36:

AANACCCNA ARAAYCANGA RGCNYTNMG

25

(2) INFORMATION FOR SEQ ID NO:37:

(i) SEQUENCE CHARACTERISTICS:  
 (A) LENGTH: 25 base pairs  
 (B) TYPE: nucleic acid  
 (C) STRANDEDNESS: single  
 (D) TOPOLOGY: linear

(ii) MOLECULE TYPE: cDNA

- 77 -

(xi) SEQUENCE DESCRIPTION: SEQ ID NO:37:

GAGCAAGTTC AGCCTGGTTA AGTCC

25

(2) INFORMATION FOR SEQ ID NO:38:

- (i) SEQUENCE CHARACTERISTICS:  
(A) LENGTH: 25 base pairs  
(B) TYPE: nucleic acid  
(C) STRANDEDNESS: single  
(D) TOPOLOGY: linear

(ii) MOLECULE TYPE: cDNA

(xi) SEQUENCE DESCRIPTION: SEQ ID NO:38:

TGGCTTATGA GTATTCTTC CAGGG

25

(2) INFORMATION FOR SEQ ID NO:39:

- (i) SEQUENCE CHARACTERISTICS:  
(A) LENGTH: 30 base pairs  
(B) TYPE: nucleic acid  
(C) STRANDEDNESS: single  
(D) TOPOLOGY: linear

(ii) MOLECULE TYPE: cDNA

(xi) SEQUENCE DESCRIPTION: SEQ ID NO:39:

GTCGCTGCTG CTGTTCTCTG CCACGTTGGC

30

(2) INFORMATION FOR SEQ ID NO:40:

- (i) SEQUENCE CHARACTERISTICS:  
(A) LENGTH: 27 base pairs  
(B) TYPE: nucleic acid  
(C) STRANDEDNESS: single  
(D) TOPOLOGY: linear

(ii) MOLECULE TYPE: cDNA

(xi) SEQUENCE DESCRIPTION: SEQ ID NO:40:

GAATTCGTCG ACATGCACGT GCGCTCA

27

- 78 -

## (2) INFORMATION FOR SEQ ID NO:41:

- (i) SEQUENCE CHARACTERISTICS:
  - (A) LENGTH: 22 base pairs
  - (B) TYPE: nucleic acid
  - (C) STRANDEDNESS: single
  - (D) TOPOLOGY: linear

(ii) MOLECULE TYPE: cDNA

(xi) SEQUENCE DESCRIPTION: SEQ ID NO:41:

CCATGGCGTT GTACAGGTCC AG

22

## (2) INFORMATION FOR SEQ ID NO:42:

- (i) SEQUENCE CHARACTERISTICS:
  - (A) LENGTH: 9 amino acids
  - (B) TYPE: amino acid
  - (D) TOPOLOGY: linear

(ii) MOLECULE TYPE: protein

(xi) SEQUENCE DESCRIPTION: SEQ ID NO:42:

Gln Ala Lys His Lys Gln Arg Lys Arg  
1 5

## (2) INFORMATION FOR SEQ ID NO:43:

- (i) SEQUENCE CHARACTERISTICS:
  - (A) LENGTH: 27 base pairs
  - (B) TYPE: nucleic acid
  - (C) STRANDEDNESS: single
  - (D) TOPOLOGY: linear

(ii) MOLECULE TYPE: cDNA

(xi) SEQUENCE DESCRIPTION: SEQ ID NO:43:

CAAGCCAAAC ACAACAGCG GAAACGC

27

## (2) INFORMATION FOR SEQ ID NO:44:

- (i) SEQUENCE CHARACTERISTICS:
  - (A) LENGTH: 37 base pairs
  - (B) TYPE: nucleic acid



- 79 -

- (C) STRANDEDNESS: single
- (D) TOPOLOGY: linear

(ii) MOLECULE TYPE: cDNA

(xi) SEQUENCE DESCRIPTION: SEQ ID NO:44:

AAGCTTCCGC GGCTAGCGAC ACCCACAACC CTCCACA

37

(2) INFORMATION FOR SEQ ID NO:45:

- (i) SEQUENCE CHARACTERISTICS:
  - (A) LENGTH: 26 base pairs
  - (B) TYPE: nucleic acid
  - (C) STRANDEDNESS: single
  - (D) TOPOLOGY: linear

(ii) MOLECULE TYPE: cDNA

(xi) SEQUENCE DESCRIPTION: SEQ ID NO:45:

ACTGTCGACA TGGTGGCCGG GACCCG

26

(2) INFORMATION FOR SEQ ID NO:46:

- (i) SEQUENCE CHARACTERISTICS:
  - (A) LENGTH: 26 base pairs
  - (B) TYPE: nucleic acid
  - (C) STRANDEDNESS: single
  - (D) TOPOLOGY: linear

(ii) MOLECULE TYPE: cDNA

(xi) SEQUENCE DESCRIPTION: SEQ ID NO:46:

ACGTTTTTCT CTTTTGTGGA GAGGAT

26

(2) INFORMATION FOR SEQ ID NO:47:

- (i) SEQUENCE CHARACTERISTICS:
  - (A) LENGTH: 21 base pairs
  - (B) TYPE: nucleic acid
  - (C) STRANDEDNESS: single
  - (D) TOPOLOGY: linear

(ii) MOLECULE TYPE: cDNA

- 80 -

(xi) SEQUENCE DESCRIPTION: SEQ ID NO:47:

TGAAGCGGCC GCAACAGACG T

21

(2) INFORMATION FOR SEQ ID NO:48:

- (i) SEQUENCE CHARACTERISTICS:
  - (A) LENGTH: 21 base pairs
  - (B) TYPE: nucleic acid
  - (C) STRANDEDNESS: single
  - (D) TOPOLOGY: linear

(ii) MOLECULE TYPE: cDNA

(xi) SEQUENCE DESCRIPTION: SEQ ID NO:48:

CTGTTGCGGC CGCTTCAACG T

21

(2) INFORMATION FOR SEQ ID NO:49:

- (i) SEQUENCE CHARACTERISTICS:
  - (A) LENGTH: 8 amino acids
  - (B) TYPE: amino acid
  - (D) TOPOLOGY: linear

(ii) MOLECULE TYPE: protein

(xi) SEQUENCE DESCRIPTION: SEQ ID NO:49:

Met Ile Pro Gly Asn Arg Met Leu  
1                                      5

(2) INFORMATION FOR SEQ ID NO:50:

- (i) SEQUENCE CHARACTERISTICS:
  - (A) LENGTH: 36 base pairs
  - (B) TYPE: nucleic acid
  - (C) STRANDEDNESS: single
  - (D) TOPOLOGY: linear

(ii) MOLECULE TYPE: cDNA

(xi) SEQUENCE DESCRIPTION: SEQ ID NO:50:

GAATTCGTCG ACATGATTCC TGGTACCGAA TGCTGA

36

(2) INFORMATION FOR SEQ ID NO:51:

- 81 -

- (i) SEQUENCE CHARACTERISTICS:
  - (A) LENGTH: 7 amino acids
  - (B) TYPE: amino acid
  - (D) TOPOLOGY: linear

(ii) MOLECULE TYPE: protein

(xi) SEQUENCE DESCRIPTION: SEQ ID NO:51:

Val Glu Gly Cys Gly Cys Arg  
1                      5

(2) INFORMATION FOR SEQ ID NO:52:

- (i) SEQUENCE CHARACTERISTICS:
  - (A) LENGTH: 38 base pairs
  - (B) TYPE: nucleic acid
  - (C) STRANDEDNESS: single
  - (D) TOPOLOGY: linear

(ii) MOLECULE TYPE: cDNA

(xi) SEQUENCE DESCRIPTION: SEQ ID NO:52:

AAGCTTCCGC GGCTCAGCGG CACCCACATC CCTCTACT

38

(2) INFORMATION FOR SEQ ID NO:53:

- (i) SEQUENCE CHARACTERISTICS:
  - (A) LENGTH: 26 base pairs
  - (B) TYPE: nucleic acid
  - (C) STRANDEDNESS: single
  - (D) TOPOLOGY: linear

(ii) MOLECULE TYPE: cDNA

(xi) SEQUENCE DESCRIPTION: SEQ ID NO:53:

ACTACCGCGG TAAATGAGTG CGACGG

26

(2) INFORMATION FOR SEQ ID NO:54:

- (i) SEQUENCE CHARACTERISTICS:
  - (A) LENGTH: 20 base pairs
  - (B) TYPE: nucleic acid
  - (C) STRANDEDNESS: single
  - (D) TOPOLOGY: linear

- 82 -

(ii) MOLECULE TYPE: cDNA

(xi) SEQUENCE DESCRIPTION: SEQ ID NO:54:

CACTGCATTC TAGTTGTGGT

20

(2) INFORMATION FOR SEQ ID NO:55:

- (i) SEQUENCE CHARACTERISTICS:  
(A) LENGTH: 27 base pairs  
(B) TYPE: nucleic acid  
(C) STRANDEDNESS: single  
(D) TOPOLOGY: linear

(ii) MOLECULE TYPE: cDNA

(xi) SEQUENCE DESCRIPTION: SEQ ID NO:55:

CAAGCCAAAC ACAAACAGCG GAAACGC

27

(2) INFORMATION FOR SEQ ID NO:56:

- (i) SEQUENCE CHARACTERISTICS:  
(A) LENGTH: 37 base pairs  
(B) TYPE: nucleic acid  
(C) STRANDEDNESS: single  
(D) TOPOLOGY: linear

(ii) MOLECULE TYPE: cDNA

(xi) SEQUENCE DESCRIPTION: SEQ ID NO:56:

AAGCTTCCGC GGCTAGCGAC ACCCACAACC CTCCACA

37

(2) INFORMATION FOR SEQ ID NO:57:

- (i) SEQUENCE CHARACTERISTICS:  
(A) LENGTH: 22 base pairs  
(B) TYPE: nucleic acid  
(C) STRANDEDNESS: single  
(D) TOPOLOGY: linear

(ii) MOLECULE TYPE: cDNA

(xi) SEQUENCE DESCRIPTION: SEQ ID NO:57:

- 83 -

TCCACGGGGA GCAAACAGCG CA

22

## (2) INFORMATION FOR SEQ ID NO:58:

- (i) SEQUENCE CHARACTERISTICS:
  - (A) LENGTH: 27 base pairs
  - (B) TYPE: nucleic acid
  - (C) STRANDEDNESS: single
  - (D) TOPOLOGY: linear

(ii) MOLECULE TYPE: cDNA

## (xi) SEQUENCE DESCRIPTION: SEQ ID NO:58:

CATACCGCGG AGCTAGTGGC AGCCACA

27

## (2) INFORMATION FOR SEQ ID NO:59:

- (i) SEQUENCE CHARACTERISTICS:
  - (A) LENGTH: 37 base pairs
  - (B) TYPE: nucleic acid
  - (C) STRANDEDNESS: single
  - (D) TOPOLOGY: linear

(ii) MOLECULE TYPE: cDNA

## (xi) SEQUENCE DESCRIPTION: SEQ ID NO:59:

GAATTCGTCG ACATGATTCC TGGTAACCGA ATGCTGA

37

## (2) INFORMATION FOR SEQ ID NO:60:

- (i) SEQUENCE CHARACTERISTICS:
  - (A) LENGTH: 27 base pairs
  - (B) TYPE: nucleic acid
  - (C) STRANDEDNESS: single
  - (D) TOPOLOGY: linear

(ii) MOLECULE TYPE: cDNA

## (xi) SEQUENCE DESCRIPTION: SEQ ID NO:60:

ACGCTTGGCC CTCCGGCGTC GGGTCAA

27

## (2) INFORMATION FOR SEQ ID NO:61:

- (i) SEQUENCE CHARACTERISTICS:

- 84 -

- (A) LENGTH: 30 base pairs
- (B) TYPE: nucleic acid
- (C) STRANDEDNESS: single
- (D) TOPOLOGY: linear

(ii) MOLECULE TYPE: cDNA

(xi) SEQUENCE DESCRIPTION: SEQ ID NO:61:

TTTTTCCAG TCTTTGGAC ACCAGGTGG

30

(2) INFORMATION FOR SEQ ID NO:62:

- (i) SEQUENCE CHARACTERISTICS:
  - (A) LENGTH: 37 base pairs
  - (B) TYPE: nucleic acid
  - (C) STRANDEDNESS: single
  - (D) TOPOLOGY: linear

(ii) MOLECULE TYPE: cDNA

(xi) SEQUENCE DESCRIPTION: SEQ ID NO:62:

AAGCTCCGC GGCTAGGAC ACCACAACC CTCCACA

(2) INFORMATION FOR SEQ ID NO:63:

- (i) SEQUENCE CHARACTERISTICS:
  - (A) LENGTH: 7 amino acids
  - (B) TYPE: amino acid
  - (D) TOPOLOGY: linear

(ii) MOLECULE TYPE: protein

(xi) SEQUENCE DESCRIPTION: SEQ ID NO:63:

Val Glu Gly Cys Gly Cys Arg  
1 5

- 85 -

## WHAT IS CLAIMED IS:

1. A method of producing an osteogenic protein preparation comprising a heterodimer of a first polypeptide subunit and a second polypeptide subunit comprising the steps of culturing in a suitable culture media one or more cell lines transformed with a first and a second nucleotide sequence, said first nucleotide sequence being selected from the group consisting of:
  - the nucleotide sequence as shown in SEQ ID NO: 3;
  - a nucleotide sequence which encodes the same sequence of amino acids as encoded by the nucleotide sequence shown in SEQ ID NO: 3;
  - a nucleotide sequence which is at least 80% homologous with the nucleotide sequence shown in SEQ ID NO: 3 and which encodes a polypeptide having the osteogenic activity of P3 OF 31-34 subunit B; and
  - a nucleotide sequence which would be at least 80% homologous with the nucleotide sequence shown in SEQ ID NO: 3 but for the redundancy of the genetic code and which encodes a polypeptide having the osteogenic activity of P3 OF 31-34 subunit B; and said second nucleotide sequence being selected from the group consisting of:
    - the nucleotide sequence as shown in SEQ ID NO: 1;
    - a nucleotide sequence which encodes the same sequence of amino acids as encoded by the nucleotide sequence shown in SEQ ID NO: 1;
    - a nucleotide sequence which is at least 80% homologous with the nucleotide sequence shown in SEQ ID NO: 1 and which encodes a polypeptide having the osteogenic activity of P3 OF 31-34 subunit D; and

- 86 -

a nucleotide sequence which would be at least 80% homologous with the nucleotide sequence shown in SEQ ID NO: 1 but for the redundancy of the genetic code and which encodes a polypeptide having the osteogenic activity of P3 OF 31-34 subunit D to produce said first and second polypeptide subunits, forming heterodimers from said first and second subunits by linking them with a disulfide bond, and isolating said heterodimers.

10

2. The method of claim 1 wherein one cell line is transformed with nucleic acid sequences encoding said first and second subunits.

15

3. The method of claim 1 of producing an osteogenic protein preparation comprising heterodimers of P3 OF 31-34 subunit B and P3 OF 31-34 subunit D comprising the steps of culturing in a suitable culture media one or more cell lines transformed with nucleic acid sequences encoding P3 OF 31-34 subunit B and P3 OF 31-34 subunit D to produce said subunits, forming heterodimers of said subunits by linking them with at least one disulfide bond, and isolating said heterodimers.

20

4. The method of claim 3 wherein one cell line is transformed with nucleic acid sequences encoding P3 OF 31-34 subunit B and P3 OF 31-34 subunit D.

25

5. The method of claim 1, 2, 3 or 4 wherein said polypeptide subunits are expressed by means of a heterologous prepro sequence.

30



- 87 -

6. The method of claim 1 wherein said cell lines are selected from the group consisting of mammalian, bacterial, insect and yeast cell lines.

5 7. The method of claim 1 wherein said cell lines are Chinese hamster ovary cell lines.

8. The method of claim 1 wherein said heterodimers are isolated from the culture medium  
10 according to the steps of (a) subjecting said culture medium to a series of chromatography steps utilizing a Q-Sepharose column, an S-Sepharose column and a Phenyl-Sepharose column to recover an active fraction and (b)  
15 subjecting the active fraction to reverse phase chromatography using a C-18 high performance liquid chromatography column equilibrated with buffers containing trifluoroacetic acid and acetonitrile by  
20 eluting the active preparation at concentrations between 35% and 45% acetonitrile.

9. An osteogenic protein preparation produced according to the method of claim 1, 2, 3 or  
25 4.

10. The product of claim 9 wherein said heterodimer is purified and isolated.

11. A pharmaceutical product comprising an  
30 osteogenic protein preparation according to claim 9.

12. A method for inducing bone formation in a mammal comprising administering to said mammal an effective amount of the osteogenic preparation of  
35 claim 9.

- 88 -

13. The method of claim 12 wherein said osteogenic preparation is admixed with a physiologically acceptable matrix material.

5 14. A composition for implantation into a mammal comprising the osteogenic preparation of claim 9 admixed with a physiologically acceptable matrix material.

10 15. The composition according to claim 14 wherein said physiologically acceptable matrix material is selected from the group consisting of tricalcium phosphate, hydroxyapatite, collagen, plaster of paris, thermoplastic resins, polylactic  
15 acid, polyglycolic acid and polycaprolactic acid.

16. A cell transformed with purified and isolated nucleic acids comprising a first and a second nucleotide sequence, said first nucleotide sequence  
20 being selected from the group consisting of:

the nucleotide sequence as shown in SEQ ID  
NO: 3;

a nucleotide sequence which encodes the same  
sequence of amino acids as encoded by the nucleotide  
25 sequence shown in SEQ ID NO: 3;

a nucleotide sequence which is at least 80%  
homologous with the nucleotide sequence shown in SEQ  
ID NO: 3 and which encodes a polypeptide having the  
osteogenic activity of P3 OF 31-34 subunit B; and

30 a nucleotide sequence which would be at least  
80% homologous with the nucleotide sequence shown in  
SEQ ID NO: 3 but for the redundancy of the genetic  
code and which encodes a polypeptide having the  
osteogenic activity of P3 OF 31-34 subunit B; and said

- 89 -

second nucleotide sequence being selected from the group consisting of:

the nucleotide sequence as shown in SEQ ID NO: 1;

5 a nucleotide sequence which encodes the same sequence of amino acids as encoded by the nucleotide sequence shown in SEQ ID NO: 1;

10 a nucleotide sequence which is at least 80% homologous with the nucleotide sequence shown in SEQ ID NO: 1 and which encodes a polypeptide having the osteogenic activity of P3 OF 31-34 subunit D; and

15 a nucleotide sequence which would be at least 80% homologous with the nucleotide sequence shown in SEQ ID NO: 1 but for the redundancy of the genetic code and which encodes a polypeptide having the osteogenic activity of P3 OF 31-34 subunit D.

17. The cell according to claim 16 which is transformed with purified and isolated nucleic acid sequences encoding P3 OF 31-34 subunit B and P3 OF 20 31-34 subunit D.

18. A method of preparing a cell line capable of producing an osteogenic protein preparation 25 comprising a heterodimer of a first polypeptide subunit and a second polypeptide subunit comprising the steps of transforming a cell line with a first and a second nucleotide sequence, said first nucleotide sequence being selected from the group consisting of:

30 the nucleotide sequence as shown in SEQ ID NO: 3;

a nucleotide sequence which encodes the same sequence of amino acids as encoded by the nucleotide sequence shown in SEQ ID NO: 3;

- 90 -

a nucleotide sequence which is at least 80% homologous with the nucleotide sequence shown in SEQ ID NO: 3 and which encodes a polypeptide having the osteogenic activity of P3 OF 31-34 subunit B; and

5 a nucleotide sequence which would be at least 80% homologous with the nucleotide sequence shown in SEQ ID NO: 3 but for the redundancy of the genetic code and which encodes a polypeptide having the osteogenic activity of P3 OF 31-34 subunit B; and said  
10 second nucleotide sequence being selected from the group consisting of:

the nucleotide sequence as shown in SEQ ID NO: 1;

15 a nucleotide sequence which encodes the same sequence of amino acids as encoded by the nucleotide sequence shown in SEQ ID NO: 1;

20 a nucleotide sequence which is at least 80% homologous with the nucleotide sequence shown in SEQ ID NO: 1 and which encodes a polypeptide having the osteogenic activity of P3 OF 31-34 subunit D; and

a nucleotide sequence which would be homologous with 80% of the nucleotides shown in SEQ ID NO: 1 but for the redundancy of the genetic code and which encodes a polypeptide having the osteogenic  
25 activity of P3 OF 31-34 subunit D.

19. The method according to claim 18 comprising a first step in which said cell line is transformed with one of said first and second  
30 nucleotide sequences and a second step in which said cell line is transformed with the other of said first and second nucleotide sequences.

- 91 -

20. The method according to claim 18 wherein said cell line is transformed with a vector comprising both said first and said second nucleotide sequences.

5           21. The method according to claim 18 wherein said first nucleotide sequence encodes P3 OF 31-34 subunit B and said second nucleotide sequence encodes P3 OF 31-34 subunit D.

10           22. A vector comprising a first and a second DNA sequence in operative association with an expression control sequence therefore, said first nucleotide sequence being selected from the group consisting of:

15           the nucleotide sequence as shown in SEQ ID NO: 3;

          a nucleotide sequence which encodes the same sequence of amino acids as encoded by the nucleotide sequence shown in SEQ ID NO: 3;

20           a nucleotide sequence which is at least 80% homologous with the nucleotide sequence shown in SEQ ID NO: 3 and which encodes a polypeptide having the osteogenic activity of P3 OF 31-34 subunit B; and

          a nucleotide sequence which would be at least  
25 80% homologous with the nucleotide sequence shown in SEQ ID NO: 3 but for the redundancy of the genetic code and which encodes a polypeptide having the osteogenic activity of P3 OF 31-34 subunit B; and said  
30 second nucleotide sequence being selected from the group consisting of:

          the nucleotide sequence as shown in SEQ ID NO: 1;

          a nucleotide sequence which encodes the same sequence of amino acids as encoded by the nucleotide  
35 sequence shown in SEQ ID NO: 1;

- 92 -

a nucleotide sequence which is at least 80% homologous with the nucleotide sequence shown in SEQ ID NO: 1 and which encodes a polypeptide having the osteogenic activity of P3 OF 31-34 subunit D; and

5

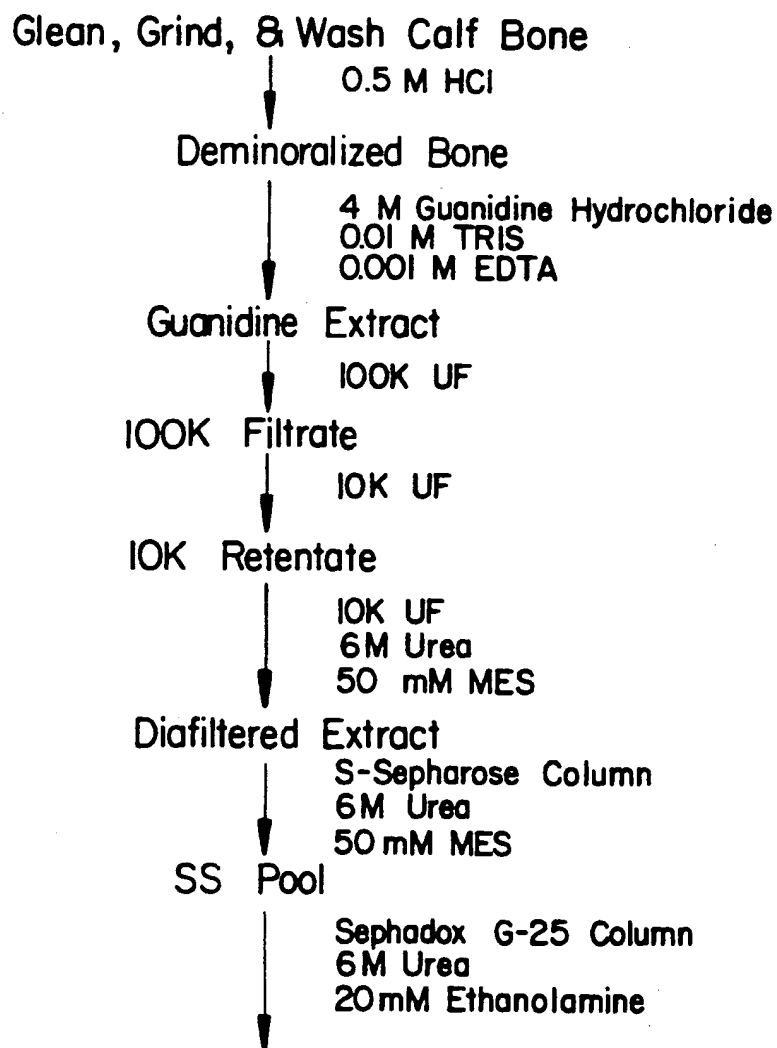
a nucleotide sequence which would be at least 80% homologous with the nucleotide sequence shown in SEQ ID NO: 1 but for the redundancy of the genetic code and which encodes a polypeptide having the osteogenic activity of P3 OF 31-34 subunit D.

10

23. The vector according to claim 22 wherein said first nucleotide sequence encodes P3 OF 31-34 subunit B and said second nucleotide sequence encodes P3 OF 31-34 subunit D.

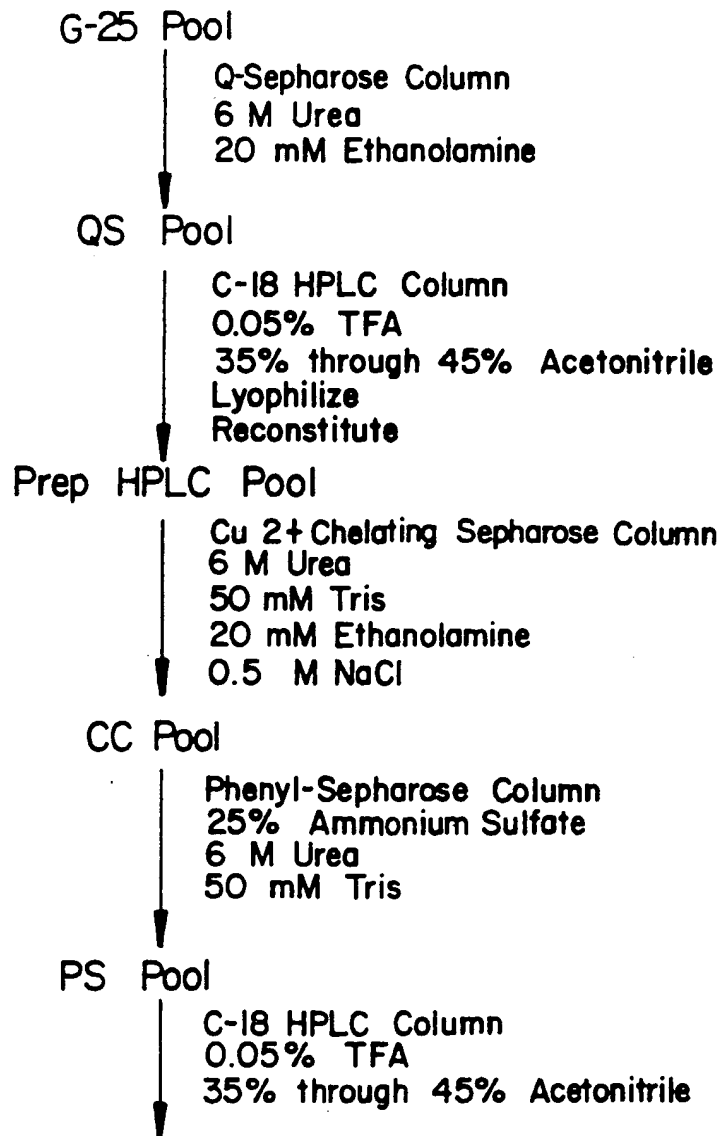
1 / 13

**FIG. 1**  
**Purification of Osteogenic Factors**

**SUBSTITUTE SHEET**

2 / 13

## FIG. 1 cont.



SUBSTITUTE SHEET



FIG. 2B  
+ DTT

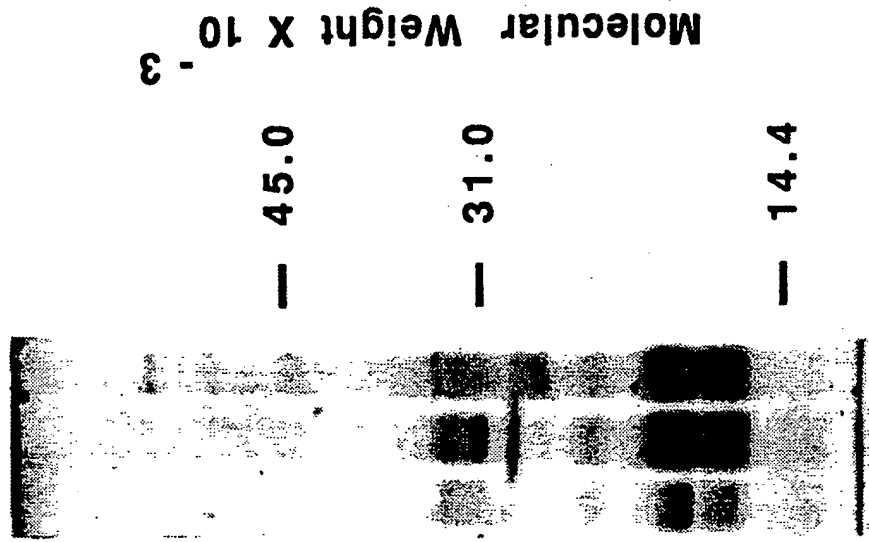


FIG. 2A  
- DTT



FIG. 3A

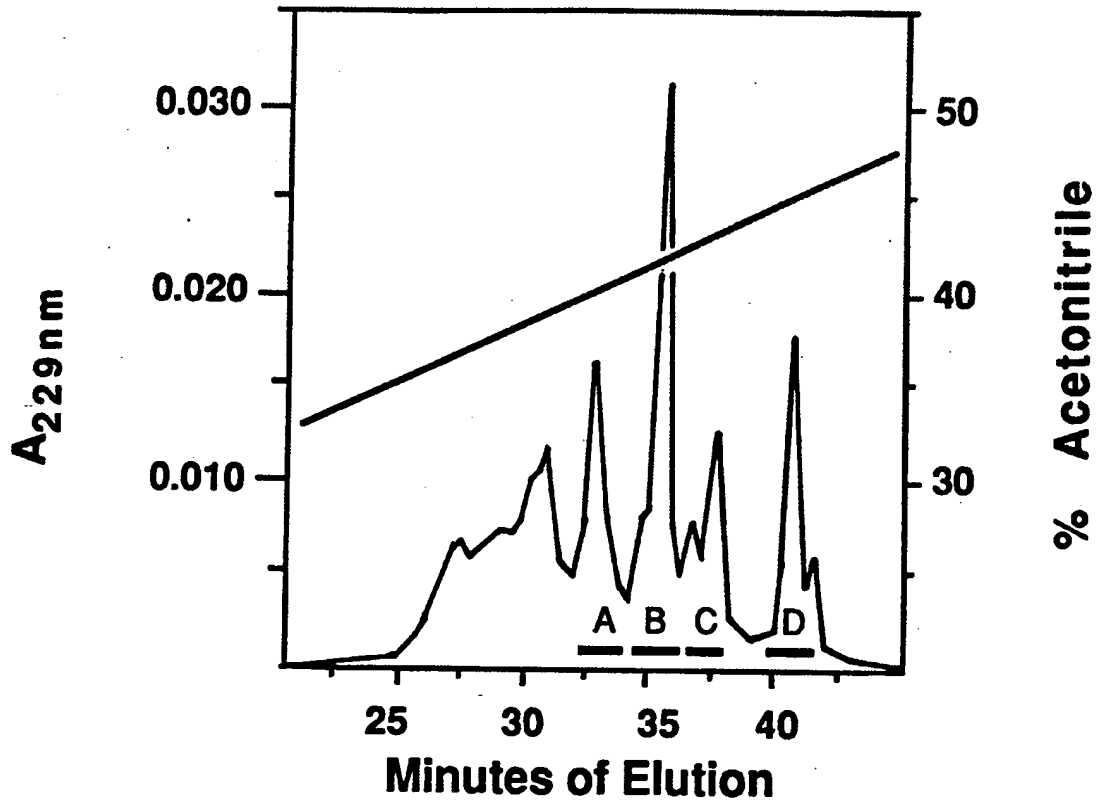
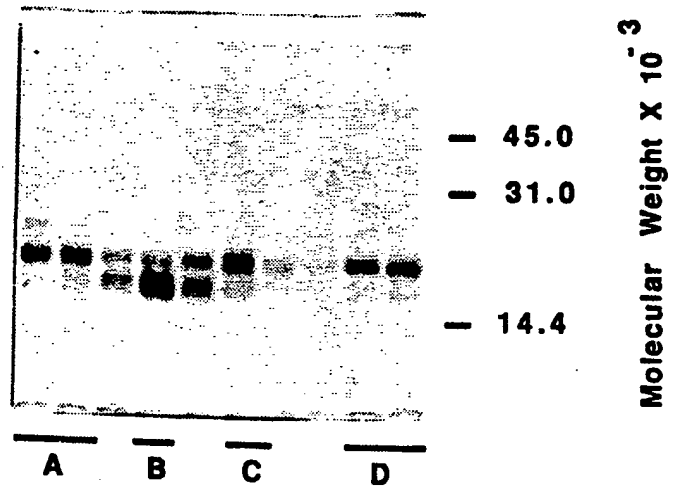


FIG. 3B



5 / 13

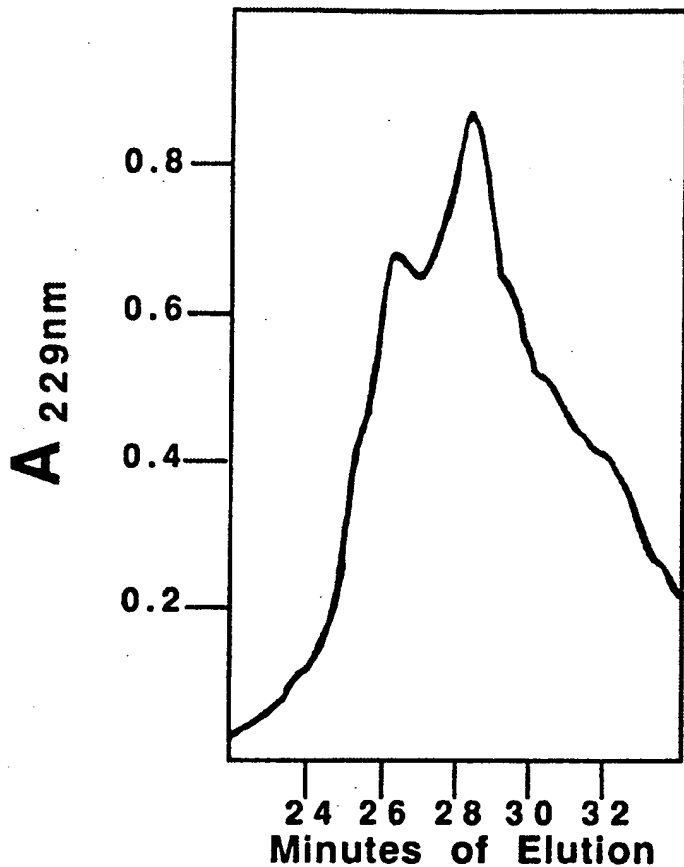


FIG. 4A

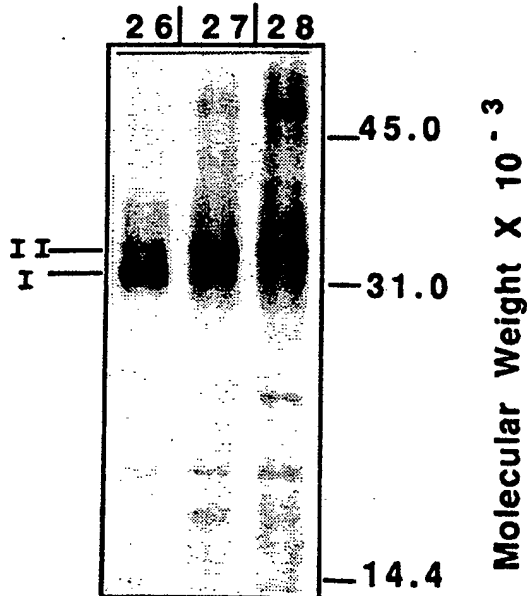


FIG. 4B

FIG. 5A

Tube # 26

+DTT → C-18

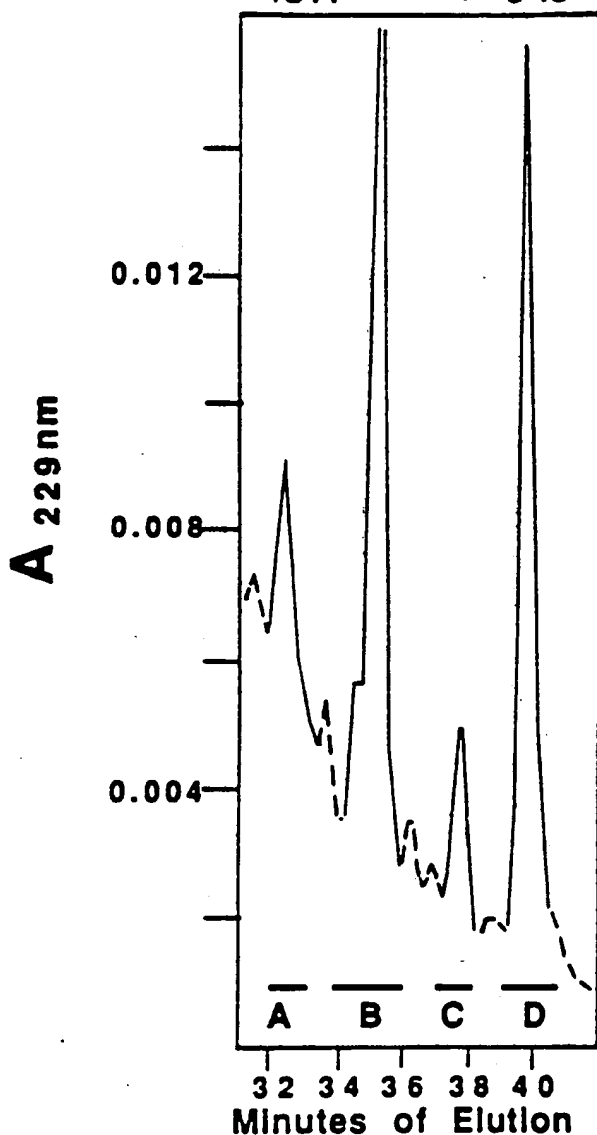
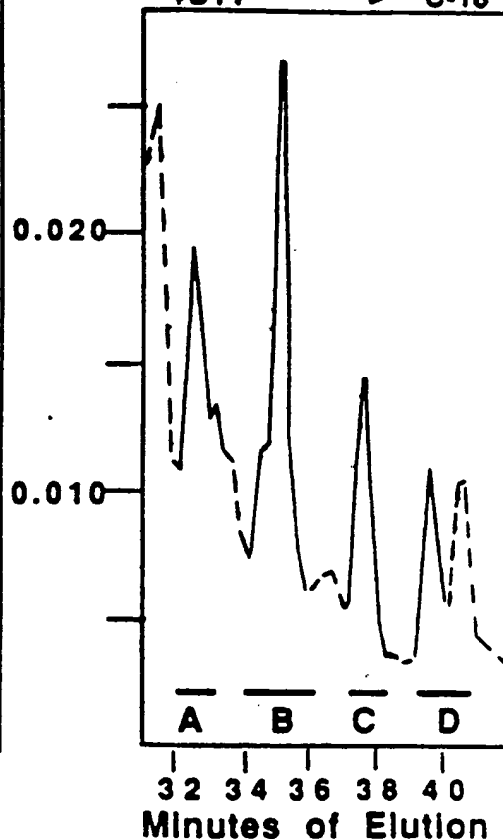


FIG. 5B

Tube # 28

+DTT → C-18



7 / 13

## FIG. 6

10 20 30 40 50 60 70  
TCCACGGGGAGCAAACAGCGCAGCCAGAACCCTCCAAGACGCCCAAGAACCAGGAAGCCCTGCGGATGGCC  
S T G S K Q R S Q N R S K T P K N Q E A L R M A

80 90 100 110 120 130 140  
AACGTGGCAGAGAACAGCAGCAGCGACCAGAGGCAGGCCTGTAAGAAGCAGGACTGTATGTCAGCTTCCGA  
N V A E N S S S D Q R Q A C K K H E L Y V S F R

150 160 170 180 190 200 210  
GACCTGGGCTGGCAGGACTGGATCATCGCGCCTGAAGGCTACGCCCTACTACTGTGAGGGGGAGTGTGCC  
D L G W Q D W I I A P E G Y A A Y Y C E G E C A

220 230 240 250 260 270 280  
TTCCCTCTGAACTCCTACATGAACGCCACCAACCAGCCATCGTGCAGACGCTGGTCCACTTCATCAACCCG  
F P L N S Y M N A T N H A I V Q T L V H F I N P

290 300 310 320 330 340 350 360  
GAAACGGTGCCCAAGCCCTGCTGTGCGCCACGCAGCTCAATGCCATCTCCGTCTCTACTTCGATGACAGC  
E T V P K P C C A P T Q L N A I S V L Y F D D S

370 380 390 400 410  
TCCAACGTCATCCTGAAGAAATACAGAAACATGGTGGTCCGGCCCTGTGGCTGCCAC  
S N V I L K K Y R N M V V R A C G C H

SUBSTITUTE SHEET

8 / 13

FIG. 7

10 20 30 40 50 60 70  
| | | | | | |  
CAAGCCAAACACAAACAGCGGAAACGCCTTAAGTCCAGCTGTAAGAGACACCCTTTGTACGTGGACTTCAGT  
Q A K H K Q R K R L K S S C K R H P L Y V D F S

80 90 100 110 120 130 140  
| | | | | | |  
GACGTGGGGTGGAAATGACTGGATTGTGGCTCCCCCGGGGTATCAGGCCTTTTACTGCCACGGAGAATGCCCT  
D V G W N D W I V A P P G Y H A F Y C H G E C P

150 160 170 180 190 200 210  
| | | | | | |  
TTTCCTCTGGCTGATCATCTGAACTCCACTAATCATGCCATTGTTTCAGACGTTGGTCAACTCTGTAACTCT  
F P L A D H L N S T N H A I V Q T L V N S V N S

220 230 240 250 260 270 280  
| | | | | | |  
AAGATTCCCTAAGGCATGCTGTGTCCTCCGACAGAACTCAGTGCTATCTCGATGCTGTACCTTGACGAGAATGAA  
K I P K A C C V P T E L S A I S M L Y L D E N E

290 300 310 320 330 340  
| | | | | | |  
AAGTTGTATTAAAGAACTATCAGGACATGGTTGTGGAGGGTTGTGGGTGTCGC  
K V V L K N Y Q D M V V E G C G C R

SUBSTITUTE SHEET

9 / 13

## FIG. 8

10            20            30            40            50            60            70  
 |            |            |            |            |            |            |  
 ATGATTCTGGTAACCGAATGCTGATGGTCGTTTTATTATGCCAAGTCCTGCTAGGAGGCGCGAGCCATGCT  
 M I P G N R M L M V V L L C Q V L L G G A S H A

80            90            100            110            120            130            140  
 |            |            |            |            |            |            |  
 AGTTTGATACCTGAGACGGGGAAGAAAAAGTCGCCGAGATTCAGGGCCACGCGGGAGGACGCCGCTCAGGG  
 S L I P E T G K K K V A E I Q G H A G G R R S G

150            160            170            180            190            200            210  
 |            |            |            |            |            |            |  
 CAGAGCCATGAGCTCCTGCGGGACTTCGAGGCGACACTTCTGCAGATGTTTGGGCTGCGCCGCCCGCCGCGAG  
 Q S H E L L R D F E A T L L Q M F G L R R R P Q

220            230            240            250            260            270            280  
 |            |            |            |            |            |            |  
 CCTAGCAAGAGTGCCGTCATTCCGGACTACATGCGGGATCTTTACCGGCTTCAGTCTGGGGAGGAGGAGGAA  
 P S K S A V I P D Y M R D L Y R L Q S G E E E E

290            300            310            320            330            340            350            360  
 |            |            |            |            |            |            |            |  
 GAGCAGATCCACAGCACTGGTCTTGAGTATCCTGAGCGCCCGCCAGCCGGGCCAACACCGTGAGGAGCTTC  
 E Q I H S T G L E Y P E R P A S R A N T V R S F

370            380            390            400            410            420            430  
 |            |            |            |            |            |            |  
 CACCACGAAGAACATCTGGAGAACATCCCAGGGACCAGTGAAAACCTGCTTTTCGTTTCCTCTTTAACCTC  
 H H E E H L E N I P G T S E N S A F R F L F N L

440            450            460            470            480            490            500  
 |            |            |            |            |            |            |  
 AGCAGCATCCCTGAGAACGAGGCGATCTCCTCTGCAGAGCTTCGGCTCTTCCGGGAGCAGGTGGACCAGGGC  
 S S I P E N E A I S S A E L R L F R E Q V D Q G

SUBSTITUTE SHEET

FIG. 8 CONT.'

510 520 530 540 550 560 570  
 CCTGATTGGGAAAGGGGCTTCCACCGTATAAACATTTATGAGGTTATGAAGCCCCCAGCAGAAGTGGTGCCT  
 P D W E R G F H R I N I Y E V M K P P A E V V P

580 590 600 610 620 630 640  
 GGGCACCTCATCACGACTACTGGACACGAGACTGGTCCACCACAATGTGACACGGTGGGAAACTTTTGAT  
 G H L I T R L L D T R L V H H N V T R W E T F D

650 660 670 680 690 700 710 720  
 GTGAGCCCTGCGGTCTTCGCTGGACCCGGGAGAAGCAGCCAAACTATGGGCTAGCCATTGAGGTGACTCAC  
 V S P A V L R W T R E K Q P N Y G L A I E V T H

730 740 750 760 770 780 790  
 CTCCATCAGACTCGGACCCACCAGGGCCAGCATGTCAGGATTAGCCGATCGTTACCTCAAGGGAGTGGGAAT  
 L H Q T R T H Q G Q H V R I S R S L P Q G S G N

800 810 820 830 840 850 860  
 TGGGCCAGCTCCGGCCCTCCTGGTCACCTTTGGCCATGATGGCCGGGGCCATGCCTTGACCCGACGCCGG  
 W A Q L R P L L V T F G H D G R G H A L T R R R

870 880 890 900 910 920 930  
 AGGGCCAAGCGTAGCCCTAAGCATCACTCACAGCGGGCCAGGAAGAAGAATAAGAAGTGGCGGGGCCACTCG  
 R A K R S P K H H S Q R A R K K N K N C R R H S  
 ↑

940 950 960 970 980 990 1000  
 CTCTATGTGGACTTCAGCGATGTGGGCTGGAATGACTGGATTGTGGCCCCACCAGGCTACCAGGCCTTCTAC  
 L Y V D F S D V G W N D W I V A P P G Y Q A F Y



11 / 13

## FIG. 8 CONT.'

1010      1020      1030      1040      1050      1060      1070      1080  
|           |           |           |           |           |           |           |  
TGCCATGGGGACTGCCCCCTTCCACTGGCTGACCACCTCAACTCAACCAACCATGCCATTGTGCAGACCCTG  
C H G D C P F P L A D H L N S T N H A I V Q T L

1090      1100      1110      1120      1130      1140      1150  
|           |           |           |           |           |           |           |  
GTCAATTCTGTCAATTCCAGTATCCCCAAAGCCTGTTGTGTGCCCACTGAACTGAGTGCCATCTCCATGCTG  
V N S V N S S I P K A C C V P T E L S A I S M L

1160      1170      1180      1190      1200      1210      1220  
|           |           |           |           |           |           |           |  
TACCTGGATGAGTATGATAAGGTGGTACTGAAAAATTATCAGGAGATGGTAGTAGAGGGATGTGGGTGCCGC  
Y L D E Y D K V V L K N Y Q E M V V E G C G C R

SUBSTITUTE SHEET

12 / 13

FIG. 9

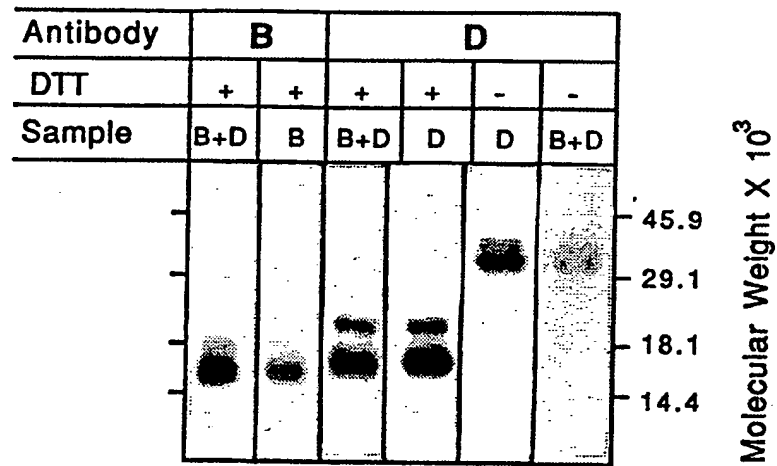
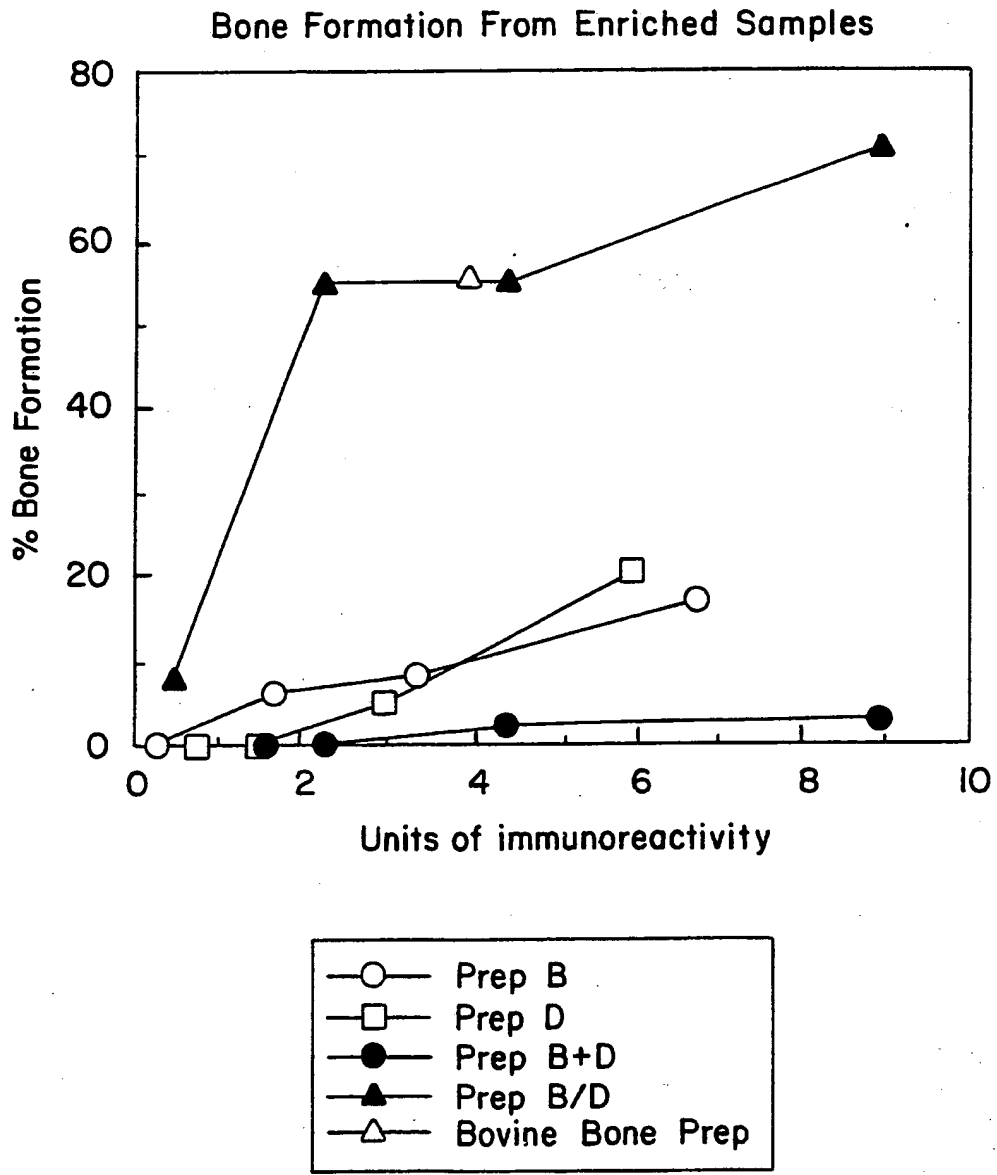


FIG. 10



# INTERNATIONAL SEARCH REPORT

International Application No. PCT/US91/04686

<b>I. CLASSIFICATION OF SUBJECT MATTER</b> (if several classification symbols apply, indicate all) <sup>6</sup>		
According to International Patent Classification (IPC) or to both National Classification and IPC IPC (5): A61F 2/02; C12Q 1/68 A61K 37/10 U.S. CL. 424/426		
<b>II. FIELDS SEARCHED</b>		
Minimum Documentation Searched <sup>7</sup>		
Classification System	Classification Symbols	
U.S.	424/400, 426; 435/6; 514/12	
Documentation Searched other than Minimum Documentation to the extent that such Documents are included in the Fields Searched <sup>8</sup>		
<b>III. DOCUMENTS CONSIDERED TO BE RELEVANT <sup>9</sup></b>		
Category <sup>*</sup>	Citation of Document, <sup>11</sup> with indication, where appropriate, of the relevant passages <sup>12</sup>	Relevant to Claim No. <sup>13</sup>
A	US, A, 4,725,536 (FRITSCH ET AL) 16 FEBRUARY 1988 See entire document.	1-23
A	US, A, 4,734,363 (DATTAGUPTA ET AL) 29 MARCH 1988 See entire document.	1-23
A	US, A, 4,757,006 (TOOLE, JR. ET AL) 12 JULY 1988 See entire document.	1-23
A	US, A, 4,863,899 (TODARO) 05 SEPTEMBER 1989 See entire document	1-23
A	US, A, 4,877,864 (WANG ET AL) 31 OCTOBER 1989 See entire document.	1-23
A	US, A, 4,952,404 (VALLEE ET AL) 28 AUGUST 1990 See entire document.	1-23
A	US, A, 4,975,526 (KUBERASAMPATH ET AL) 04 DECEMBER 1990; See entire document.	1-23
A	US, A, 5,017,486 (SAWAI ET AL) 21 MAY 1991 See entire document.	1-23
<p><sup>*</sup> Special categories of cited documents: <sup>10</sup></p> <p>"A" document defining the general state of the art which is not considered to be of particular relevance</p> <p>"E" earlier document but published on or after the international filing date</p> <p>"L" document which may throw doubts on priority claim(s) or which is cited to establish the publication date of another citation or other special reason (as specified)</p> <p>"O" document referring to an oral disclosure, use, exhibition or other means</p> <p>"P" document published prior to the international filing date but later than the priority date claimed</p> <p>"T" later document published after the international filing date or priority date and not in conflict with the application but cited to understand the principle or theory underlying the invention</p> <p>"X" document of particular relevance; the claimed invention cannot be considered novel or cannot be considered to involve an inventive step</p> <p>"Y" document of particular relevance; the claimed invention cannot be considered to involve an inventive step when the document is combined with one or more other such documents, such combination being obvious to a person skilled in the art.</p> <p>"&amp;" document member of the same patent family</p>		
<b>IV. CERTIFICATION</b>		
Date of the Actual Completion of the International Search		Date of Mailing of this International Search Report
02 APRIL 1992		27 APR 1992
International Searching Authority		Signature of Authorized Officer
ISA/US		Thurman K. Page

**This Page is Inserted by IFW Indexing and Scanning  
Operations and is not part of the Official Record**

**BEST AVAILABLE IMAGES**

Defective images within this document are accurate representations of the original documents submitted by the applicant.

Defects in the images include but are not limited to the items checked:

- BLACK BORDERS
- IMAGE CUT OFF AT TOP, BOTTOM OR SIDES
- FADED TEXT OR DRAWING
- BLURRED OR ILLEGIBLE TEXT OR DRAWING
- SKEWED/SLANTED IMAGES
- COLOR OR BLACK AND WHITE PHOTOGRAPHS
- GRAY SCALE DOCUMENTS
- LINES OR MARKS ON ORIGINAL DOCUMENT
- REFERENCE(S) OR EXHIBIT(S) SUBMITTED ARE POOR QUALITY
- OTHER: \_\_\_\_\_

**IMAGES ARE BEST AVAILABLE COPY.**

**As rescanning these documents will not correct the image problems checked, please do not report these problems to the IFW Image Problem Mailbox.**